



Worklist: 1598

<u>LAB CASE</u>	<u>ITEM</u>	<u>TASK ID</u>	<u>DESCRIPTION</u>	
C2017-0408	1	78876	AM 13 Urine LCMS-QQQ Benz	
C2017-0410	2	79481	AM 13 Urine LCMS-QQQ Benz	
C2017-0443	1	79466	AM 13 Urine LCMS-QQQ Benz	
C2017-0460	1	79467	AM 13 Urine LCMS-QQQ Benz	
C2017-0470	1	79468	AM 13 Urine LCMS-QQQ Benz	
C2017-0486	1	79480	AM 13 Urine LCMS-QQQ Benz	
M2017-0920	3	78875	AM 13 Urine LCMS-QQQ Benz	
M2017-0949	3	79469	AM 13 Urine LCMS-QQQ Benz	
M2017-1035	3	79470	AM 13 Urine LCMS-QQQ Benz	



ISP FORENSICS - Cd'A Instrument # 62340

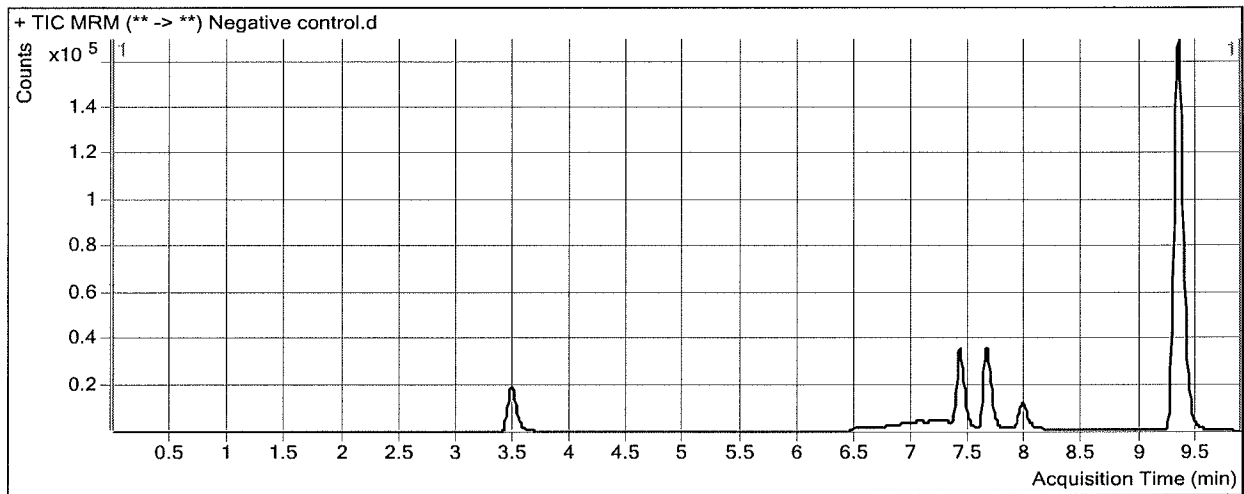
Benzodiazepine Analysis Report

Batch Data Path D:\2017 Data\3-15-17 urine benz\QuantResults\3-15-17 urine benz.batch.bin
Analysis Time 3/16/2017 8:12 AM **Analyst Name** ISP Tox
Report Time 3/16/2017 8:14 AM **Reporter Name** ISP Tox
Last Calib Update 3/16/2017 8:12 AM **Batch State** Processed

Analysis Info

Acq Time 2017-03-15 19:24 **Data File** Negative control.d
Sample Type Sample **Sample Name** Negative control
Dilution 1 **Acq Method** Benzos_Z_Drugs_ACN_FA_ISP 2016.m
Position P1-B3 **Sample Info** lot 31517
Inj Vol -1 **Comment** AM 13 Benzo and Z by LCQQQ

Sample Chromatogram



ISP FORENSICS - Cd'A Instrument # 62340

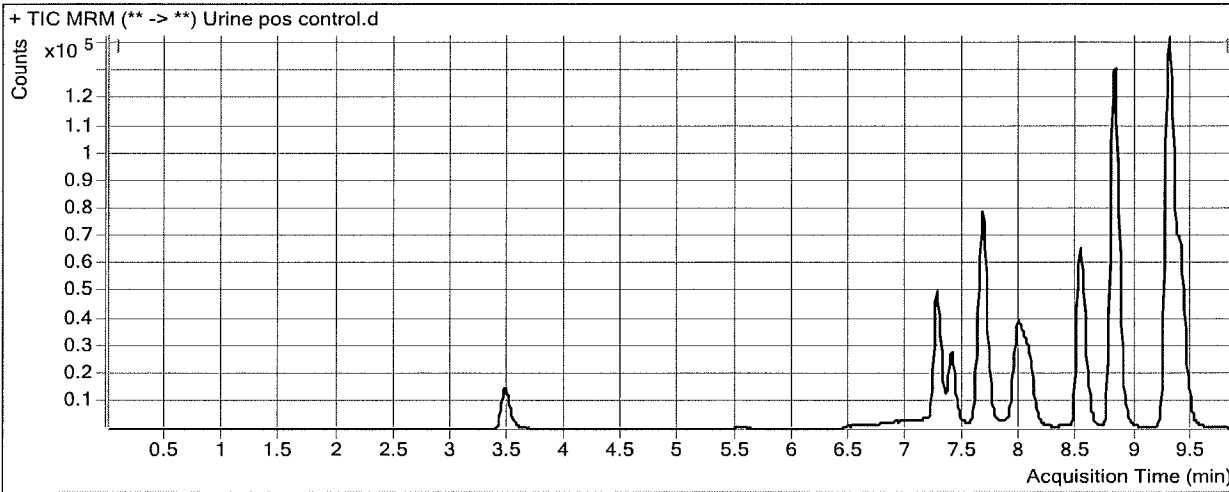
Benzodiazepine Analysis Report

Batch Data Path D:\2017 Data\3-15-17 urine benz\QuantResults\3-15-17 urine benz.batch.bin
Analysis Time 3/16/2017 8:12 AM **Analyst Name** ISP Tox
Report Time 3/16/2017 8:14 AM **Reporter Name** ISP Tox
Last Calib Update 3/16/2017 8:12 AM **Batch State** Processed

Analysis Info

Acq Time 2017-03-15 19:38 **Data File** Urine pos control.d
Sample Type Sample **Sample Name** Urine pos control
Dilution 1 **Acq Method** Benzos_Z_Drugs_ACN_FA_ISP 2016.m
Position P1-B4 **Sample Info** 300 ng/ml benz mix lot FE022207-01 in 31517
Inj Vol -1 **Comment** AM 13 Benzo and Z by LCQQQ

Sample Chromatogram



Results

Compound	ISTD Compound	RT	Response	ISTD Resp	Resp Ratio	Final Conc
Nitrazepam	Clonazepam-D4 ISTD	7.259	148788	27815	5.3492	464.2819
Oxazepam	Oxazepam D5 ISTD	7.662	201723	47791	4.2209	391.7450
Clonazepam	Clonazepam-D4 ISTD	7.970	109744	27815	3.9455	469.3618
Lorazepam	Oxazepam D5 ISTD	8.019	46893	47791	0.9812	394.1037
Alprazolam	alphahydroxyalprazolam-D5 ISTD	8.071	72896	66611	1.0944	407.2619
Flunitrazepam	Clonazepam-D4 ISTD	8.513	255991	27815	9.2033	648.2175
Temazepam	Oxazepam D5 ISTD	8.807	546955	47791	11.4446	560.0544
Diazepam	Diazepam-D5 ISTD	9.394	219190	419822	0.5221	413.9198

ISP FORENSICS - Cd'A Instrument # 62340

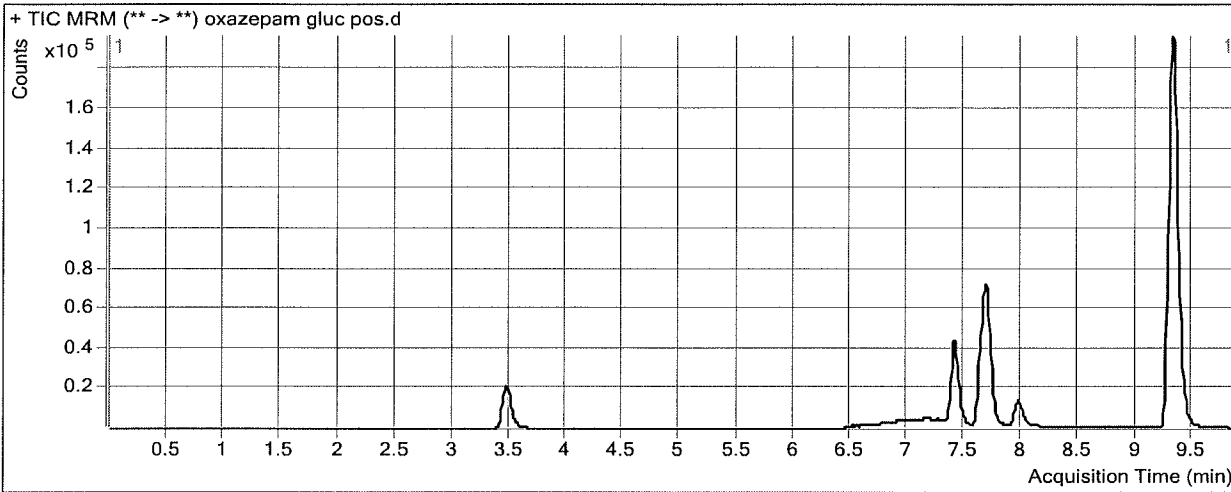
Benzodiazepine Analysis Report

Batch Data Path D:\2017 Data\3-15-17 urine benz\QuantResults\3-15-17 urine benz.batch.bin
Analysis Time 3/16/2017 8:12 AM **Analyst Name** ISP Tox
Report Time 3/16/2017 8:14 AM **Reporter Name** ISP Tox
Last Calib Update 3/16/2017 8:12 AM **Batch State** Processed

Analysis Info

Acq Time 2017-03-15 19:09 **Data File** oxazepam gluc pos.d
Sample Type Sample **Sample Name** oxazepam gluc pos
Dilution 1 **Acq Method** Benzos_Z_Drugs_ACN_FA_ISP 2016.m
Position P1-B2 **Sample Info** 300 ng/ml Cerilliant lot FE102612-01 in 31517 with glucuronidase
Inj Vol -1 **Comment** AM 13 Benzo and Z by LCQQQ

Sample Chromatogram



Results

Compound	ISTD Compound	RT	Response	ISTD Resp	Resp Ratio	Final Conc
Oxazepam	Oxazepam D5 ISTD	7.687	159212	81903	1.9439	178.3233

ISP FORENSICS - Cd'A Instrument # 62340

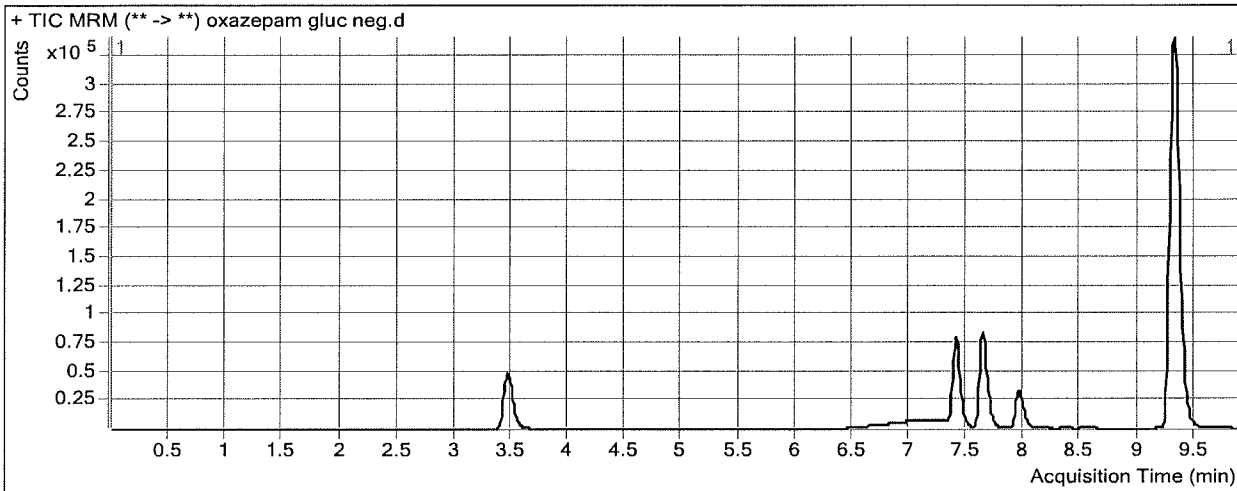
Benzodiazepine Analysis Report

Batch Data Path D:\2017 Data\3-15-17 urine benz\QuantResults\3-15-17 urine benz.batch.bin
Analysis Time 3/16/2017 8:12 AM **Analyst Name** ISP Tox
Report Time 3/16/2017 8:14 AM **Reporter Name** ISP Tox
Last Calib Update 3/16/2017 8:12 AM **Batch State** Processed

Analysis Info

Acq Time 2017-03-15 18:54 **Data File** oxazepam gluc neg.d
Sample Type Sample **Sample Name** oxazepam gluc neg
Dilution 1 **Acq Method** Benzos_Z_Drugs_ACN_FA_ISP 2016.m
Position P1-B1 **Sample Info** 300 ng/ml Cerilliant lot FE102612-01 in 31517 without glucuronidase
Inj Vol -1 **Comment** AM 13 Benzo and Z by LCQQQ

Sample Chromatogram



Results

Compound	ISTD Compound	RT	Response	ISTD Resp	Resp Ratio	Final Conc
Oxazepam	Oxazepam D5 ISTD	7.679	1677	179552	0.0093	1.8408

ISP FORENSICS - Cd'A Instrument # 62340

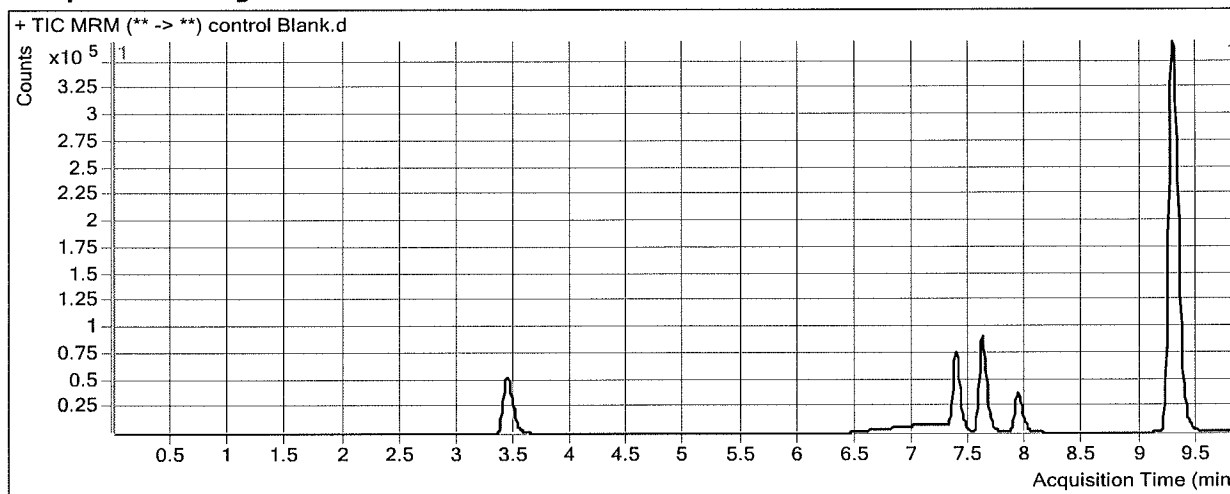
Benzodiazepine Analysis Report

Batch Data Path D:\2017 Data\3-15-17 urine benz\QuantResults\3-15-17 urine benz.batch.bin
Analysis Time 3/16/2017 8:12 AM **Analyst Name** ISP Tox
Report Time 3/16/2017 8:14 AM **Reporter Name** ISP Tox
Last Calib Update 3/16/2017 8:12 AM **Batch State** Processed

Analysis Info

Acq Time 2017-03-15 19:53 **Data File** control Blank.d
Sample Type Blank **Sample Name** Blank
Dilution 1 **Acq Method** Benzos_Z_Drugs_ACN_FA_ISP 2016.m
Position P1-A1 **Sample Info**
Inj Vol -1 **Comment** AM 13 Benzo and Z by LCQQQ

Sample Chromatogram



ISP FORENSICS - Cd'A Instrument # 62340

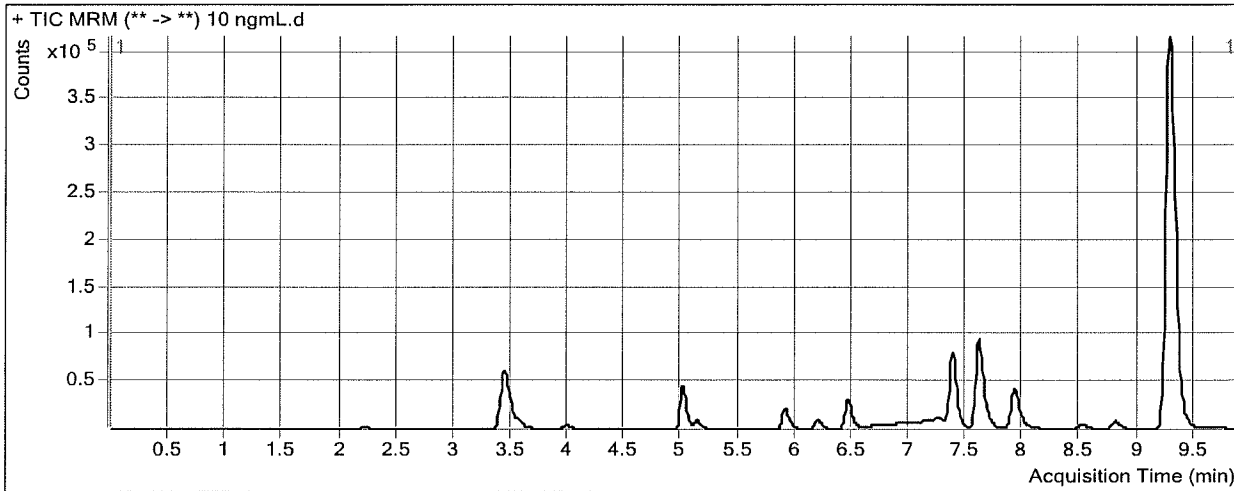
Benzodiazepine Analysis Report

Batch Data Path D:\2017 Data\3-15-17 urine benz\QuantResults\3-15-17 urine benz.batch.bin
Analysis Time 3/16/2017 8:12 AM **Analyst Name** ISP Tox
Report Time 3/16/2017 8:14 AM **Reporter Name** ISP Tox
Last Calib Update 3/16/2017 8:12 AM **Batch State** Processed

Analysis Info

Acq Time 2017-03-15 16:57 **Data File** 10 ngmL.d
Sample Type Calibration **Sample Name** 10 ngmL
Dilution 1 **Acq Method** Benzos_Z_Drugs_ACN_FA_ISP 2016.m
Position P1-A2 **Sample Info** ppd 3/15/17- Unextracted
Inj Vol -1 **Comment** AM 13 Benzo and Z by LCQQQ

Sample Chromatogram



Results

Compound	ISTD Compound	RT	Response	ISTD Resp	Resp Ratio	Final Conc
7-Aminoclonazepam	7-Aminoflunitrazepam-D7 ISTD	2.217	8077	284910	0.0283	9.9323
7-Aminoflunitrazepam	7-Aminoflunitrazepam-D7 ISTD	3.562	27380	284910	0.0961	0.0000
zopiclone	Oxazepam D5 ISTD	3.982	14617	196934	0.0742	9.1205
zolpidem	Oxazepam D5 ISTD	5.003	131093	196934	0.6657	9.6535
Chlordiazepoxide	Nordiazepam-D5 ISTD	5.130	28683	72239	0.3971	9.8837
quetiapine	Oxazepam D5 ISTD	5.906	50763	196934	0.2578	9.4965
Midazolam	Clonazepam-D4 ISTD	6.192	32374	159209	0.2033	9.9420
Flurazepam	Diazepam-D5 ISTD	6.446	99441	1264770	0.0786	0.0000
Nitrazepam	Clonazepam-D4 ISTD	7.250	16450	159209	0.1033	8.4897
alpha-Hydroxyalprazolam	alphanhydroxyalprazolam-D5 ISTD	7.405	1098	203603	0.0054	8.0964
alpha-hydroxytriazolam	Nordiazepam-D5 ISTD	7.455	3003	72239	0.0416	9.1294
Oxazepam	Oxazepam D5 ISTD	7.645	18950	196934	0.0962	9.6764
Nordiazepam	Nordiazepam-D5 ISTD	7.697	11647	72239	0.1612	8.4813
Clonazepam	Clonazepam-D4 ISTD	7.953	11883	159209	0.0746	8.1782
Lorazepam	Oxazepam D5 ISTD	8.011	4735	196934	0.0240	2.1424
Alprazolam	alphanhydroxyalprazolam-D5 ISTD	8.054	4778	203603	0.0235	9.4534
Flunitrazepam	Clonazepam-D4 ISTD	8.497	18422	159209	0.1157	11.2642
Temazepam	Oxazepam D5 ISTD	8.790	31949	196934	0.1622	9.8191
Diazepam	Diazepam-D5 ISTD	9.377	14860	1264770	0.0117	8.6408

ISP FORENSICS - Cd'A Instrument # 62340

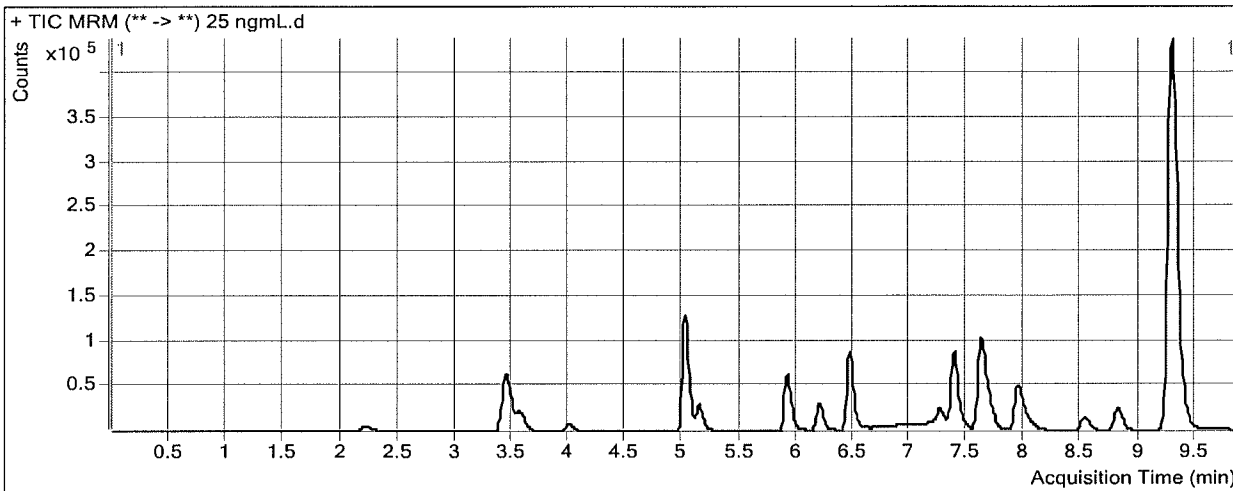
Benzodiazepine Analysis Report

Batch Data Path D:\2017 Data\3-15-17 urine benz\QuantResults\3-15-17 urine benz.batch.bin
Analysis Time 3/16/2017 8:12 AM **Analyst Name** ISP Tox
Report Time 3/16/2017 8:14 AM **Reporter Name** ISP Tox
Last Calib Update 3/16/2017 8:12 AM **Batch State** Processed

Analysis Info

Acq Time 2017-03-15 17:11 **Data File** 25 ngmL.d
Sample Type Calibration **Sample Name** 25 ngmL
Dilution 1 **Acq Method** Benzos_Z_Drugs_ACN_FA_ISP 2016.m
Position P1-A3 **Sample Info** ppd 3/15/17- Unextracted
Inj Vol -1 **Comment** AM 13 Benzo and Z by LCQQQ

Sample Chromatogram



Results

Compound	ISTD Compound	RT	Response	ISTD Resp	Resp Ratio	Final Conc
7-Aminoclonazepam	7-Aminoflunitrazepam-D7 ISTD	2.225	24529	295514	0.0830	25.3946
7-Aminoflunitrazepam	7-Aminoflunitrazepam-D7 ISTD	3.570	86495	295514	0.2927	21.8573
zopiclone	Oxazepam D5 ISTD	3.998	24647	206198	0.1195	27.3212
zolpidem	Oxazepam D5 ISTD	5.012	385008	206198	1.8672	26.5819
Chlordiazepoxide	Nordiazepam-D5 ISTD	5.138	88805	76947	1.1541	25.3014
quetiapine	Oxazepam D5 ISTD	5.914	148437	206198	0.7199	25.6346
Midazolam	Clonazepam-D4 ISTD	6.201	97811	169934	0.5756	25.3720
Flurazepam	Diazepam-D5 ISTD	6.454	291888	1321014	0.2210	20.1032
Nitrazepam	Clonazepam-D4 ISTD	7.259	51223	169934	0.3014	25.4916
alpha-Hydroxyalprazolam	alphahydroxyalprazolam-D5 ISTD	7.422	3105	221860	0.0140	24.1880
alpha-hydroxytriazolam	Nordiazepam-D5 ISTD	7.471	9419	76947	0.1224	25.7428
Oxazepam	Oxazepam D5 ISTD	7.662	57463	206198	0.2787	26.1581
Nordiazepam	Nordiazepam-D5 ISTD	7.706	38257	76947	0.4972	26.1445
Clonazepam	Clonazepam-D4 ISTD	7.970	38519	169934	0.2267	26.0260
Lorazepam	Oxazepam D5 ISTD	8.019	14906	206198	0.0723	21.9002
Alprazolam	alphahydroxyalprazolam-D5 ISTD	8.071	14045	221860	0.0633	23.6790
Flunitrazepam	Clonazepam-D4 ISTD	8.513	54984	169934	0.3236	25.6167
Temazepam	Oxazepam D5 ISTD	8.798	101553	206198	0.4925	25.6429
Diazepam	Diazepam-D5 ISTD	9.394	44259	1321014	0.0335	25.5740

ISP FORENSICS - Cd'A Instrument # 62340

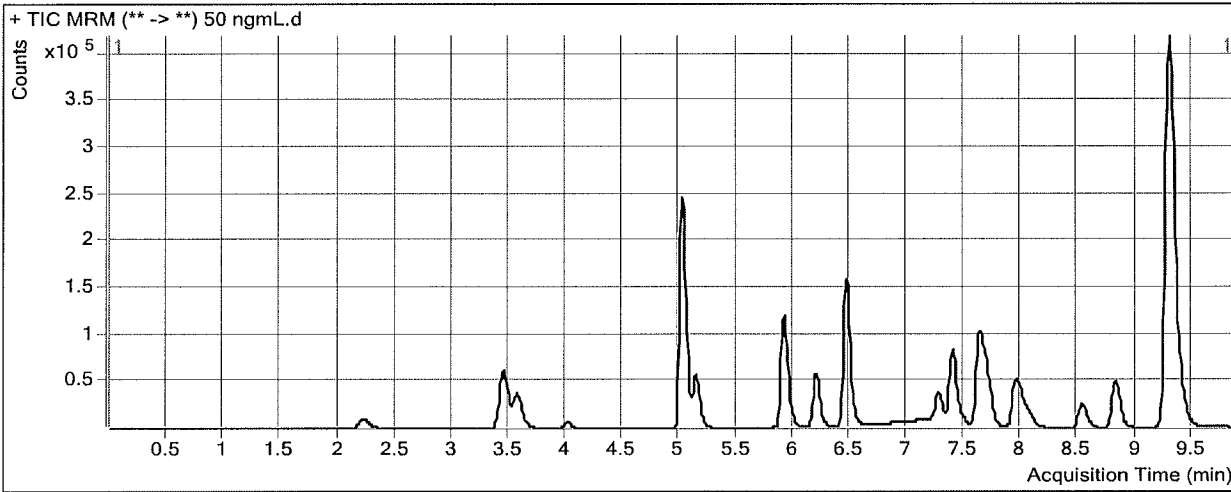
Benzodiazepine Analysis Report

Batch Data Path D:\2017 Data\3-15-17 urine benz\QuantResults\3-15-17 urine benz.batch.bin
Analysis Time 3/16/2017 8:12 AM **Analyst Name** ISP Tox
Report Time 3/16/2017 8:14 AM **Reporter Name** ISP Tox
Last Calib Update 3/16/2017 8:12 AM **Batch State** Processed

Analysis Info

Acq Time 2017-03-15 17:26 **Data File** 50 ngmL.d
Sample Type Calibration **Sample Name** 50 ngmL
Dilution 1 **Acq Method** Benzos_Z_Drugs_ACN_FA_ISP 2016.m
Position P1-A4 **Sample Info** ppd 3/15/17- Unextracted
Inj Vol -1 **Comment** AM 13 Benzo and Z by LCQQQ

Sample Chromatogram



Results

Compound	ISTD Compound	RT	Response	ISTD Resp	Resp Ratio	Final Conc
7-Aminoclonazepam	7-Aminoflunitrazepam-D7 ISTD	2.225	48987	284768	0.1720	50.7169
7-Aminoflunitrazepam	7-Aminoflunitrazepam-D7 ISTD	3.578	135848	284768	0.4770	49.9335
zopiclone	Oxazepam D5 ISTD	4.007	22423	199273	0.1125	24.7011
zolpidem	Oxazepam D5 ISTD	5.020	739336	199273	3.7102	52.6566
Chlordiazepoxide	Nordiazepam-D5 ISTD	5.147	179706	74098	2.4252	51.2074
quetiapine	Oxazepam D5 ISTD	5.914	297015	199273	1.4905	52.7132
Midazolam	Clonazepam-D4 ISTD	6.201	189306	160894	1.1766	50.4042
Flurazepam	Diazepam-D5 ISTD	6.463	552759	1262890	0.4377	54.4600
Nitrazepam	Clonazepam-D4 ISTD	7.267	99561	160894	0.6188	52.7623
alpha-Hydroxyalprazolam	alphahydroxyalprazolam-D5 ISTD	7.431	6370	210876	0.0302	54.4871
alpha-hydroxytriazolam	Nordiazepam-D5 ISTD	7.480	17988	74098	0.2428	50.4194
Oxazepam	Oxazepam D5 ISTD	7.670	115363	199273	0.5789	53.3603
Nordiazepam	Nordiazepam-D5 ISTD	7.714	73501	74098	0.9919	52.1668
Clonazepam	Clonazepam-D4 ISTD	7.979	74987	160894	0.4661	54.1727
Lorazepam	Oxazepam D5 ISTD	8.027	29013	199273	0.1456	51.9189
Alprazolam	alphahydroxyalprazolam-D5 ISTD	8.080	31864	210876	0.1511	55.1783
Flunitrazepam	Clonazepam-D4 ISTD	8.521	99664	160894	0.6194	46.0647
Temazepam	Oxazepam D5 ISTD	8.807	205487	199273	1.0312	51.4871
Diazepam	Diazepam-D5 ISTD	9.394	88810	1262890	0.0703	54.2994

ISP FORENSICS - Cd'A Instrument # 62340

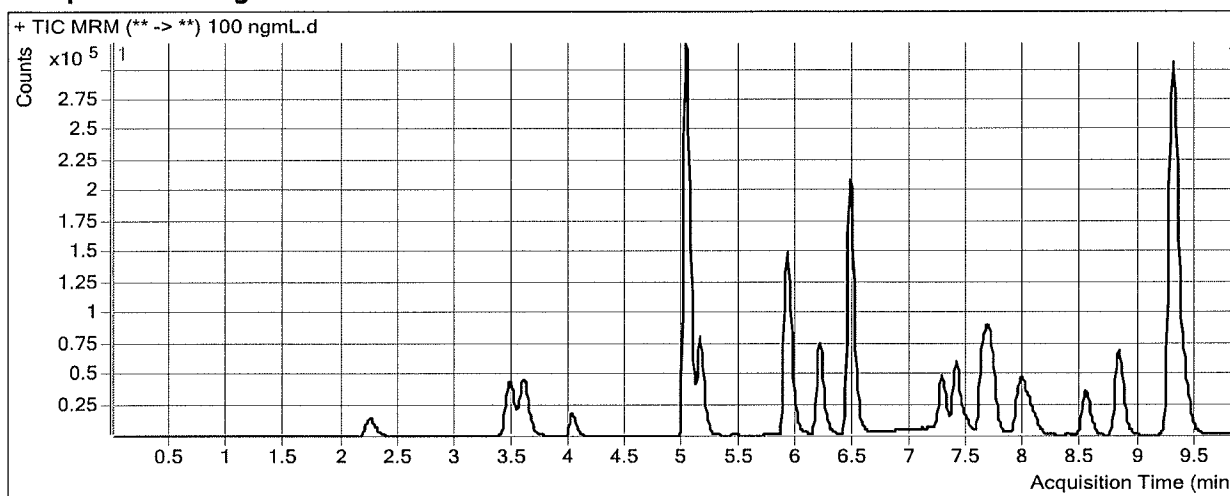
Benzodiazepine Analysis Report

Batch Data Path D:\2017 Data\3-15-17 urine benz\QuantResults\3-15-17 urine benz.batch.bin
Analysis Time 3/16/2017 8:12 AM **Analyst Name** ISP Tox
Report Time 3/16/2017 8:14 AM **Reporter Name** ISP Tox
Last Calib Update 3/16/2017 8:12 AM **Batch State** Processed

Analysis Info

Acq Time 2017-03-15 17:41 **Data File** 100 ngmL.d
Sample Type Calibration **Sample Name** 100 ngmL
Dilution 1 **Acq Method** Benzos_Z_Drugs_ACN_FA_ISP 2016.m
Position P1-A5 **Sample Info** ppd 3/15/17- Unextracted
Inj Vol -1 **Comment** AM 13 Benzo and Z by LCQQQ

Sample Chromatogram



Results

Compound	ISTD Compound	RT	Response	ISTD Resp	Resp Ratio	Final Conc
7-Aminoclonazepam	7-Aminoflunitrazepam-D7 ISTD	2.250	68091	203147	0.3352	97.5851
7-Aminoflunitrazepam	ISTD	3.595	183940	203147	0.9055	115.6806
zopiclone	Oxazepam D5 ISTD	4.015	51821	138577	0.3740	98.8862
zolpidem	Oxazepam D5 ISTD	5.020	984051	138577	7.1011	100.9806
Chlordiazepoxide	Nordiazepam-D5 ISTD	5.147	249582	50134	4.9783	103.3102
quetiapine	Oxazepam D5 ISTD	5.922	379687	138577	2.7399	97.0697
Midazolam	Clonazepam-D4 ISTD	6.201	249454	107761	2.3149	98.2249
Flurazepam	Diazepam-D5 ISTD	6.463	736721	909491	0.8100	113.8425
Nitrazepam	Clonazepam-D4 ISTD	7.267	138831	107761	1.2883	110.4299
alpha-Hydroxyalprazolam	alphahydroxyalprazolam-D5 ISTD	7.431	9600	149862	0.0641	117.6675
alpha-hydroxytriazolam	Nordiazepam-D5 ISTD	7.480	25905	50134	0.5167	106.3393
Oxazepam	Oxazepam D5 ISTD	7.670	155886	138577	1.1249	103.0879
Nordiazepam	Nordiazepam-D5 ISTD	7.714	103547	50134	2.0654	108.6652
Clonazepam	Clonazepam-D4 ISTD	7.979	99923	107761	0.9273	108.5463
Lorazepam	Oxazepam D5 ISTD	8.027	39654	138577	0.2862	109.4775
Alprazolam	alphahydroxyalprazolam-D5 ISTD	8.080	41883	149862	0.2795	101.6016
Flunitrazepam	Clonazepam-D4 ISTD	8.521	135125	107761	1.2539	89.9808
Temazepam	Oxazepam D5 ISTD	8.807	290571	138577	2.0968	102.7438
Diazepam	Diazepam-D5 ISTD	9.402	122382	909491	0.1346	104.6207

BW

ISP FORENSICS - Cd'A Instrument # 62340

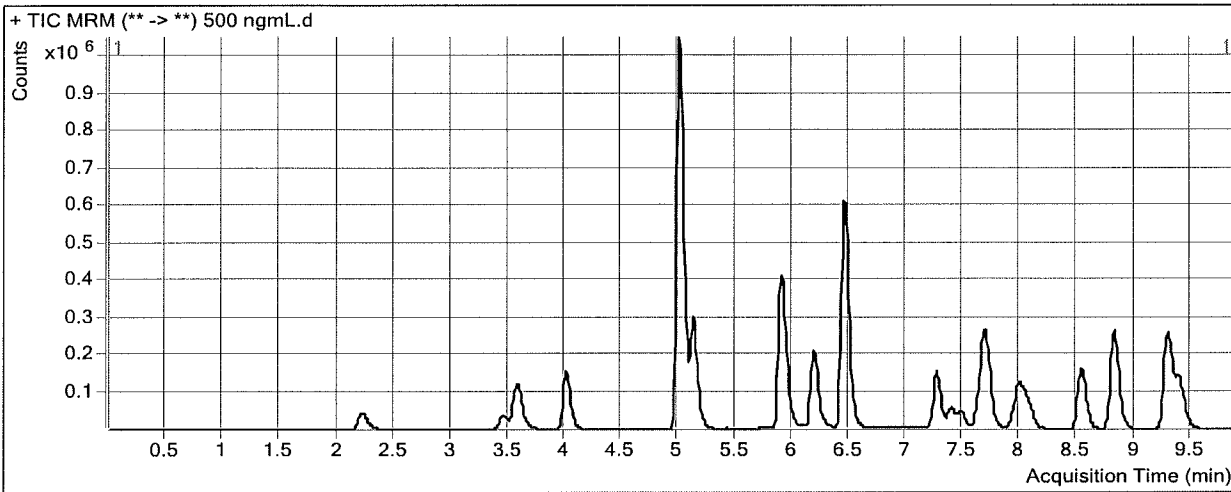
Benzodiazepine Analysis Report

Batch Data Path D:\2017 Data\3-15-17 urine benz\QuantResults\3-15-17 urine benz.batch.bin
Analysis Time 3/16/2017 8:12 AM **Analyst Name** ISP Tox
Report Time 3/16/2017 8:14 AM **Reporter Name** ISP Tox
Last Calib Update 3/16/2017 8:12 AM **Batch State** Processed

Analysis Info

Acq Time 2017-03-15 17:55 **Data File** 500 ngmL.d
Sample Type Calibration **Sample Name** 500 ngmL
Dilution 1 **Acq Method** Benzos_Z_Drugs_ACN_FA_ISP 2016.m
Position P1-A6 **Sample Info** ppd 3/15/17- Unextracted
Inj Vol -1 **Comment** AM 13 Benzo and Z by LCQQQ

Sample Chromatogram



Results

Compound	ISTD Compound	RT	Response	ISTD Resp	Resp Ratio	Final Conc
7-Aminoclonazepam	7-Aminoflunitrazepam-D7 ISTD	2.225	201483	174298	1.1560	343.1371
7-Aminoflunitrazepam	7-Aminoflunitrazepam-D7 ISTD	3.578	561980	174298	3.2242	484.7124
zopiclone	Oxazepam D5 ISTD	4.007	467200	115310	4.0517	500.0512
zolpidem	Oxazepam D5 ISTD	5.003	3467907	115310	30.0747	441.2875
Chlordiazepoxide	Nordiazepam-D5 ISTD	5.130	967464	42784	22.6127	465.8538
quetiapine	Oxazepam D5 ISTD	5.906	1192031	115310	10.3376	380.2179
Midazolam	Clonazepam-D4 ISTD	6.192	743906	88044	8.4492	365.9895
Flurazepam	Diazepam-D5 ISTD	6.446	2370304	773442	3.0646	483.7174
Nitrazepam	Clonazepam-D4 ISTD	7.267	492224	88044	5.5907	485.5461
alpha-Hydroxalprazolam	alphahydroxalprazolam-D5 ISTD	7.431	32453	125732	0.2581	477.6954
alpha-hydroxytriazolam	Nordiazepam-D5 ISTD	7.480	105073	42784	2.4559	492.6312
Oxazepam	Oxazepam D5 ISTD	7.670	533470	115310	4.6264	430.4391
Nordiazepam	Nordiazepam-D5 ISTD	7.706	395348	42784	9.2405	487.7613
Clonazepam	Clonazepam-D4 ISTD	7.979	359287	88044	4.0808	485.7419
Lorazepam	Oxazepam D5 ISTD	8.027	141880	115310	1.2304	496.1621
Alprazolam	alphahydroxalprazolam-D5 ISTD	8.071	165376	125732	1.3153	493.7247
Flunitrazepam	Clonazepam-D4 ISTD	8.521	644126	88044	7.3160	514.3035
Temazepam	Oxazepam D5 ISTD	8.807	1085065	115310	9.4100	459.3084
Diazepam	Diazepam-D5 ISTD	9.394	476144	773442	0.6156	490.0923

ISP FORENSICS - Cd'A Instrument # 62340

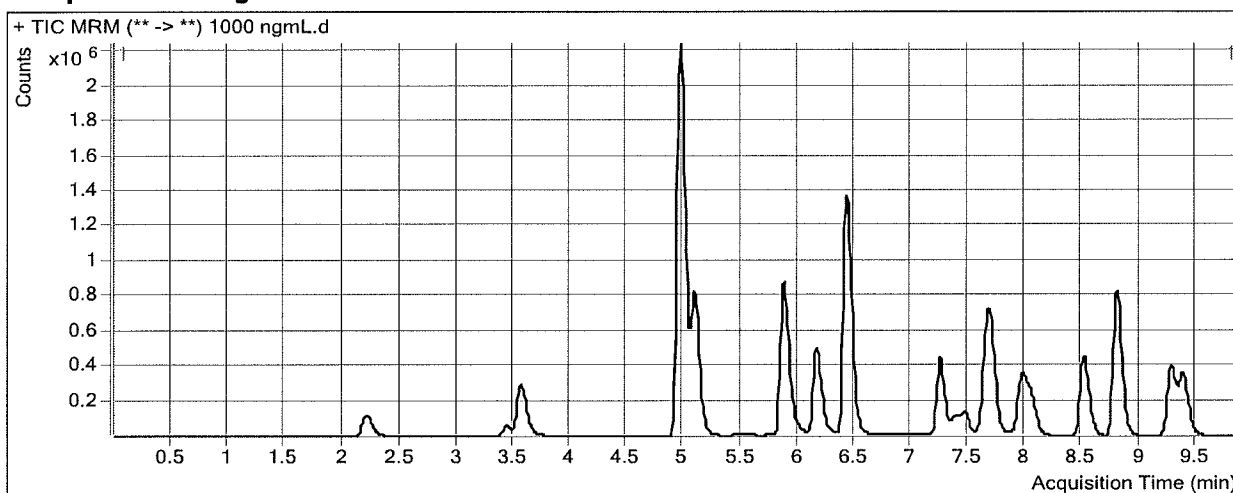
Benzodiazepine Analysis Report

Batch Data Path D:\2017 Data\3-15-17 urine benz\QuantResults\3-15-17 urine benz.batch.bin
Analysis Time 3/16/2017 8:12 AM **Analyst Name** ISP Tox
Report Time 3/16/2017 8:14 AM **Reporter Name** ISP Tox
Last Calib Update 3/16/2017 8:12 AM **Batch State** Processed

Analysis Info

Acq Time 2017-03-15 18:10 **Data File** 1000 ngmL.d
Sample Type Calibration **Sample Name** 1000 ngmL
Dilution 1 **Acq Method** Benzos_Z_Drugs_ACN_FA_ISP 2016.m
Position P1-A7 **Sample Info** ppd 3/15/17- Unextracted
Inj Vol -1 **Comment** AM 13 Benzo and Z by LCQQQ

Sample Chromatogram



Results

Compound	ISTD Compound	RT	Response	ISTD Resp	Resp Ratio	Final Conc
7-Aminoclonazepam	7-Aminoflunitrazepam-D7 ISTD	2.217	577924	267424	2.1611	670.4227
7-Aminoflunitrazepam	7-Aminoflunitrazepam-D7 ISTD	3.570	1420940	267424	5.3134	839.0257
zolpidem	Oxazepam D5 ISTD	4.970	8891599	196022	45.3602	681.8987
Chlordiazepoxide	Nordiazepam-D5 ISTD	5.098	2849443	71354	39.9338	826.5922
quetiapine	Oxazepam D5 ISTD	5.872	2841439	196022	14.4955	546.5209
Midazolam	Clonazepam-D4 ISTD	6.159	1945450	150229	12.9499	574.7383
Flurazepam	Diazepam-D5 ISTD	6.421	5982938	1217223	4.9152	801.9413
Nitrazepam	Clonazepam-D4 ISTD	7.250	1431848	150229	9.5311	836.3290
alpha-Hydroxyalprazolam	alphahydroxyalprazolam-D5 ISTD	7.405	120560	236153	0.5105	940.5824
alpha-hydroxytriazolam	Nordiazepam-D5 ISTD	7.463	337803	71354	4.7342	927.0431
Oxazepam	Oxazepam D5 ISTD	7.653	1634522	196022	8.3385	795.1992
Nordiazepam	Nordiazepam-D5 ISTD	7.697	1153906	71354	16.1715	856.3756
Clonazepam	Clonazepam-D4 ISTD	7.953	1087634	150229	7.2398	873.6101
Lorazepam	Oxazepam D5 ISTD	8.002	448144	196022	2.2862	928.5049
Alprazolam	alphahydroxyalprazolam-D5 ISTD	8.054	419840	236153	1.7778	680.3466
Flunitrazepam	Clonazepam-D4 ISTD	8.497	1875671	150229	12.4854	883.2067
Temazepam	Oxazepam D5 ISTD	8.790	3566345	196022	18.1936	899.3087
Diazepam	Diazepam-D5 ISTD	9.377	1352466	1217223	1.1111	904.5605

ISP FORENSICS - Cd'A Instrument # 62340

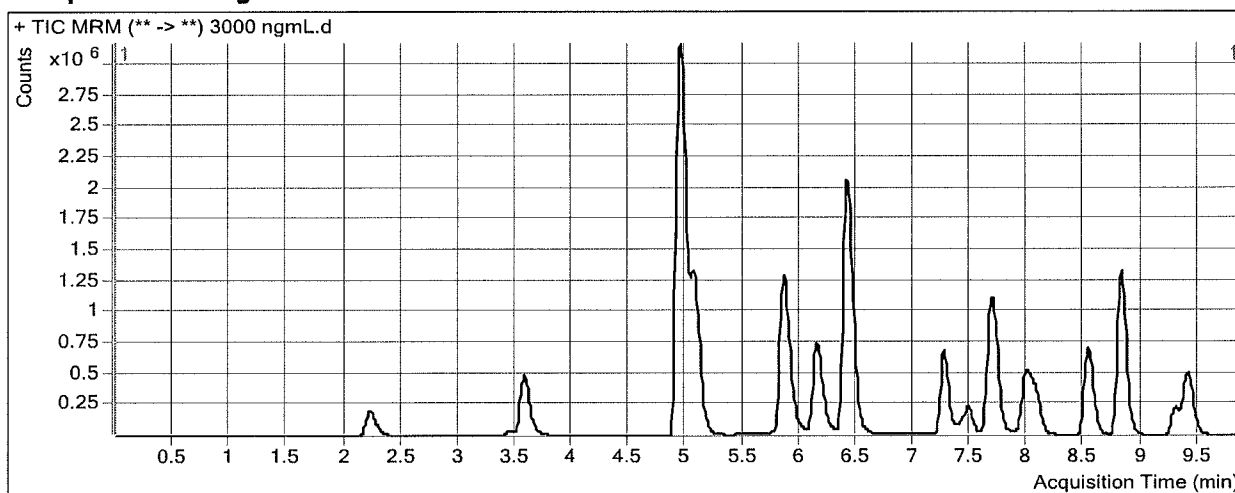
Benzodiazepine Analysis Report

Batch Data Path D:\2017 Data\3-15-17 urine benz\QuantResults\3-15-17 urine benz.batch.bin
Analysis Time 3/16/2017 8:12 AM **Analyst Name** ISP Tox
Report Time 3/16/2017 8:14 AM **Reporter Name** ISP Tox
Last Calib Update 3/16/2017 8:12 AM **Batch State** Processed

Analysis Info

Acq Time 2017-03-15 18:25 **Data File** 3000 ngmL.d
Sample Type Calibration **Sample Name** 3000 ngmL
Dilution 1 **Acq Method** Benzos_Z_Drugs_ACN_FA_ISP 2016.m
Position P1-A8 **Sample Info** ppd 3/15/17- Unextracted
Inj Vol -1 **Comment** AM 13 Benzo and Z by LCQQQ

Sample Chromatogram



Results

Compound	ISTD Compound	RT	Response	ISTD Resp	Resp Ratio	Final Conc
7-Aminoclonazepam	7-Aminoflunitrazepam-D7 ISTD	2.225	982706	153889	6.3858	3006.6569
7-Aminoflunitrazepam	7-Aminoflunitrazepam-D7 ISTD	3.570	2332949	153889	15.1599	3003.6175
zolpidem	Oxazepam D5 ISTD	4.945	14786668	95127	155.4412	3118.0718
Chlordiazepoxide	Nordiazepam-D5 ISTD	5.073	4735088	33595	140.9476	3032.3072
quetiapine	Oxazepam D5 ISTD	5.856	4722996	95127	49.6493	3000.3111
Midazolam	Clonazepam-D4 ISTD	6.151	3421460	72531	47.1722	3003.4297
Flurazepam	Diazepam-D5 ISTD	6.404	10163166	657397	15.4597	3003.3427
Nitrazepam	Clonazepam-D4 ISTD	7.259	2327510	72531	32.0898	3002.3446
alpha-Hydroxyalprazolam	alphanhydroxyalprazolam-D5 ISTD	7.422	202452	120876	1.6749	3002.8704
alpha-hydroxytriazolam	Nordiazepam-D5 ISTD	7.471	572213	33595	17.0329	3000.8017
Oxazepam	Oxazepam D5 ISTD	7.670	2584130	95127	27.1650	3098.7017
Nordiazepam	Nordiazepam-D5 ISTD	7.714	1868377	33595	55.6153	3001.7870
Clonazepam	Clonazepam-D4 ISTD	7.970	1673164	72531	23.0682	3002.4255
Lorazepam	Oxazepam D5 ISTD	8.027	697646	95127	7.3338	2995.5413
Alprazolam	alphanhydroxyalprazolam-D5 ISTD	8.071	711872	120876	5.8893	3002.0547
Flunitrazepam	Clonazepam-D4 ISTD	8.521	2923514	72531	40.3070	2997.7399
Temazepam	Oxazepam D5 ISTD	8.807	5549393	95127	58.3366	3112.3075
Diazepam	Diazepam-D5 ISTD	9.402	2151545	657397	3.2728	3001.9366

ISP FORENSICS - Cd'A Instrument # 62340

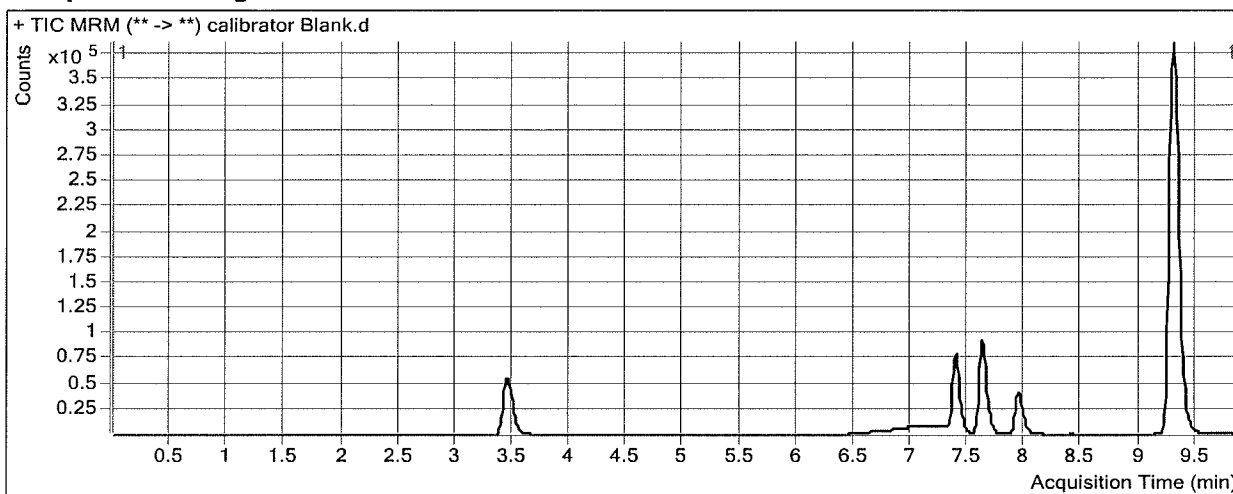
Benzodiazepine Analysis Report

Batch Data Path D:\2017 Data\3-15-17 urine benz\QuantResults\3-15-17 urine benz.batch.bin
Analysis Time 3/16/2017 8:12 AM **Analyst Name** ISP Tox
Report Time 3/16/2017 8:14 AM **Reporter Name** ISP Tox
Last Calib Update 3/16/2017 8:12 AM **Batch State** Processed

Analysis Info

Acq Time 2017-03-15 18:40 **Data File** calibrator Blank.d
Sample Type Blank **Sample Name** Blank
Dilution 1 **Acq Method** Benzos_Z_Drugs_ACN_FA_ISP 2016.m
Position P1-A1 **Sample Info**
Inj Vol -1 **Comment** AM 13 Benzo and Z by LCQQQ

Sample Chromatogram



Results

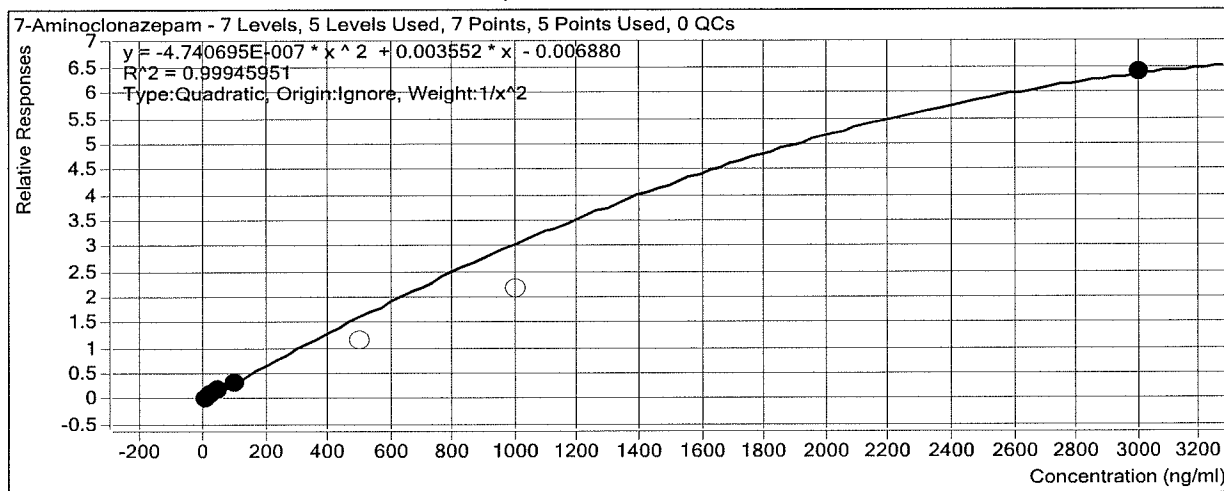
Compound	ISTD Compound	RT	Response	ISTD Resp	Resp Ratio	Final Conc
Flurazepam	Diazepam-D5 ISTD	6.463	2941	1183846	0.0025	0.0000

ISP Forensics Calibration Curve Report

Batch Data Path D:\2017 Data\3-15-17 urine benz\QuantResults\3-15-17 urine benz.batch.bin

Last Calib Update 3/16/2017 8:12 AM **Analyst Name** ISP TOX

Target Compound 7-Aminoclonazepam
Internal Standard 7-Aminoflunitrazepam-D7 ISTD



Sample	Level	Enabled	Exp Conc	Final Conc	Accuracy
10 ng/mL	2	<input checked="" type="checkbox"/>	10	9.9	99.3
25 ng/mL	4	<input checked="" type="checkbox"/>	25	25.4	101.6
50 ng/mL	5	<input checked="" type="checkbox"/>	50	50.7	101.4
100 ng/mL	6	<input checked="" type="checkbox"/>	100	97.6	97.6
500 ng/mL	7	<input type="checkbox"/>	500	343.1	68.6
1000 ng/mL	8	<input type="checkbox"/>	1000	670.4	67.0
3000 ng/mL	9	<input checked="" type="checkbox"/>	3000	3006.7	100.2

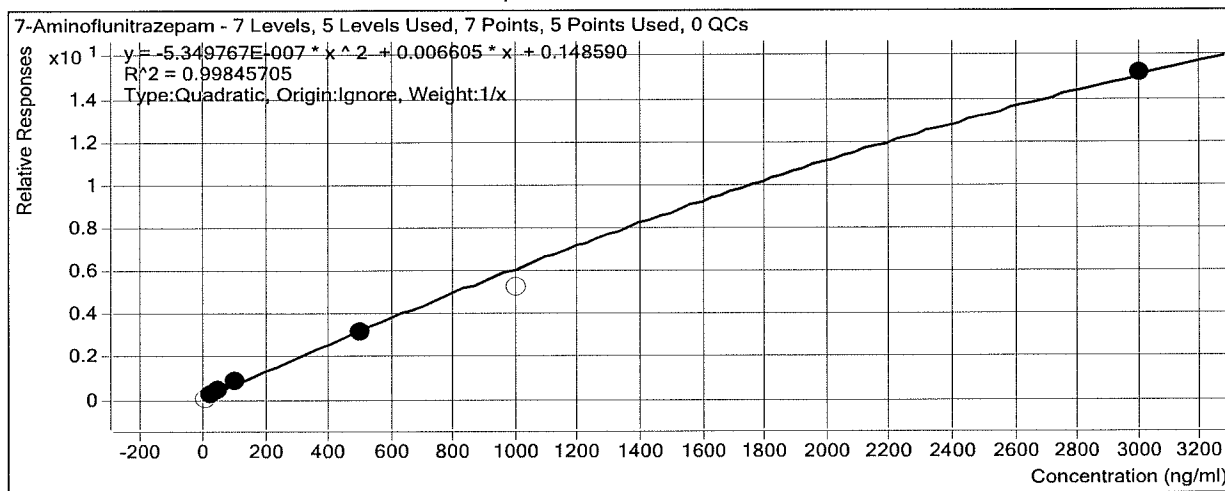
BW

ISP Forensics Calibration Curve Report

Batch Data Path D:\2017 Data\3-15-17 urine benz\QuantResults\3-15-17 urine benz.batch.bin

Last Calib Update 3/16/2017 8:12 AM **Analyst Name** ISP TOX

Target Compound 7-Aminoflunitrazepam
Internal Standard 7-Aminoflunitrazepam-D7 ISTD



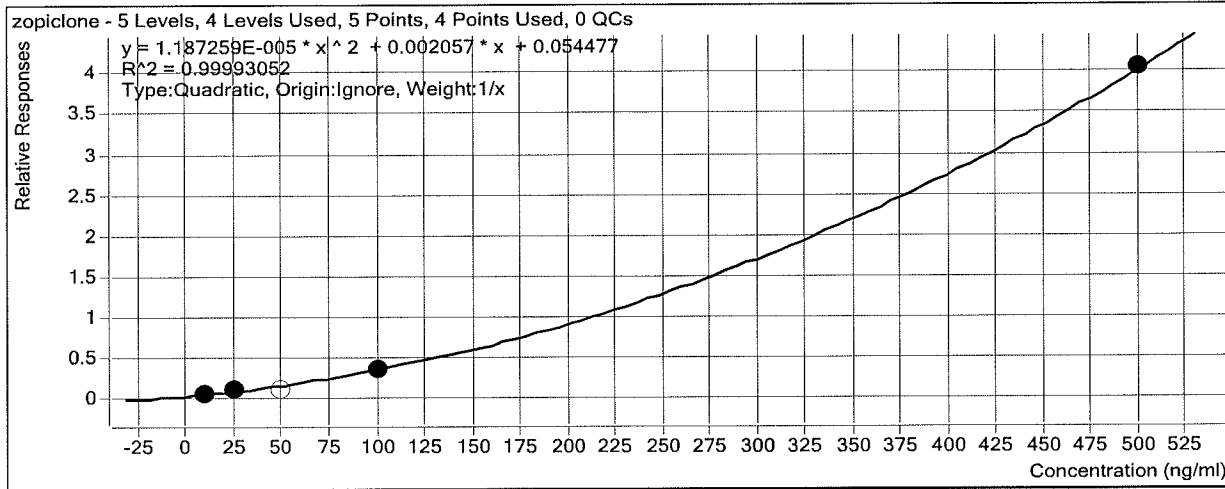
Sample	Level	Enabled	Exp Conc	Final Conc	Accuracy
10 ng/mL	2	<input type="checkbox"/>	10	0.0	0.0
25 ng/mL	4	<input checked="" type="checkbox"/>	25	21.9	87.4
50 ng/mL	5	<input checked="" type="checkbox"/>	50	49.9	99.9
100 ng/mL	6	<input checked="" type="checkbox"/>	100	115.7	115.7
500 ng/mL	7	<input checked="" type="checkbox"/>	500	484.7	96.9
1000 ng/mL	8	<input type="checkbox"/>	1000	839.0	83.9
3000 ng/mL	9	<input checked="" type="checkbox"/>	3000	3003.6	100.1

ISP Forensics Calibration Curve Report

Batch Data Path D:\2017 Data\3-15-17 urine benz\QuantResults\3-15-17 urine benz.batch.bin

Last Calib Update 3/16/2017 8:12 AM **Analyst Name** ISP TOX

Target Compound zopiclone
Internal Standard Oxazepam D5 ISTD



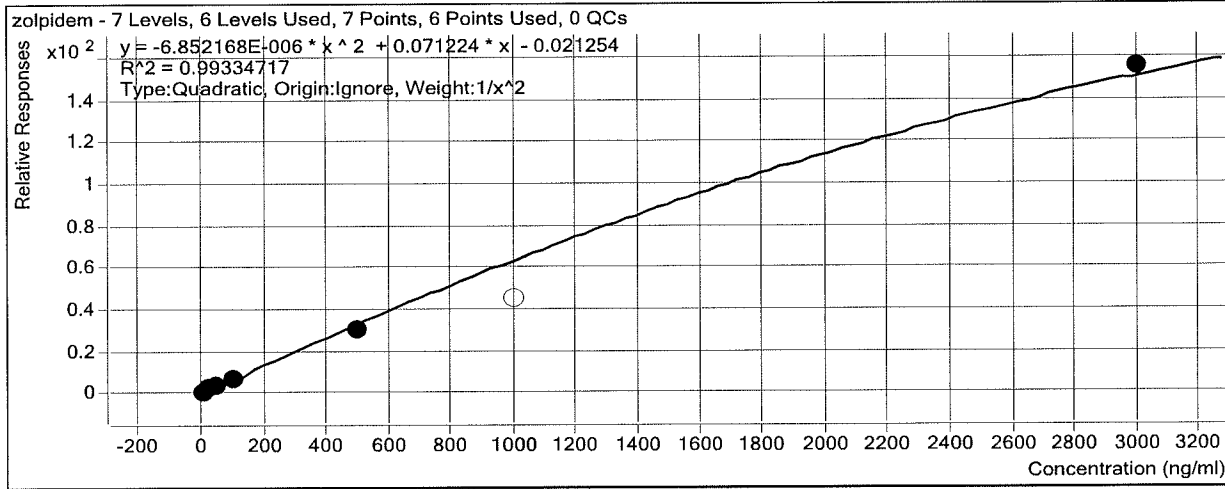
Sample	Level	Enabled	Exp Conc	Final Conc	Accuracy
10 ng/mL	2	<input checked="" type="checkbox"/>	10	9.1	91.2
25 ng/mL	4	<input checked="" type="checkbox"/>	25	27.3	109.3
50 ng/mL	5	<input type="checkbox"/>	50	24.7	49.4
100 ng/mL	6	<input checked="" type="checkbox"/>	100	98.9	98.9
500 ng/mL	7	<input checked="" type="checkbox"/>	500	500.1	100.0
1000 ng/mL	8	<input checked="" type="checkbox"/>	1000	0.0	0.0
3000 ng/mL	9	<input checked="" type="checkbox"/>	3000	0.0	0.0

ISP Forensics Calibration Curve Report

Batch Data Path D:\2017 Data\3-15-17 urine benz\QuantResults\3-15-17 urine benz.batch.bin

Last Calib Update 3/16/2017 8:12 AM **Analyst Name** ISP TOX

Target Compound zolpidem
Internal Standard Oxazepam D5 ISTD



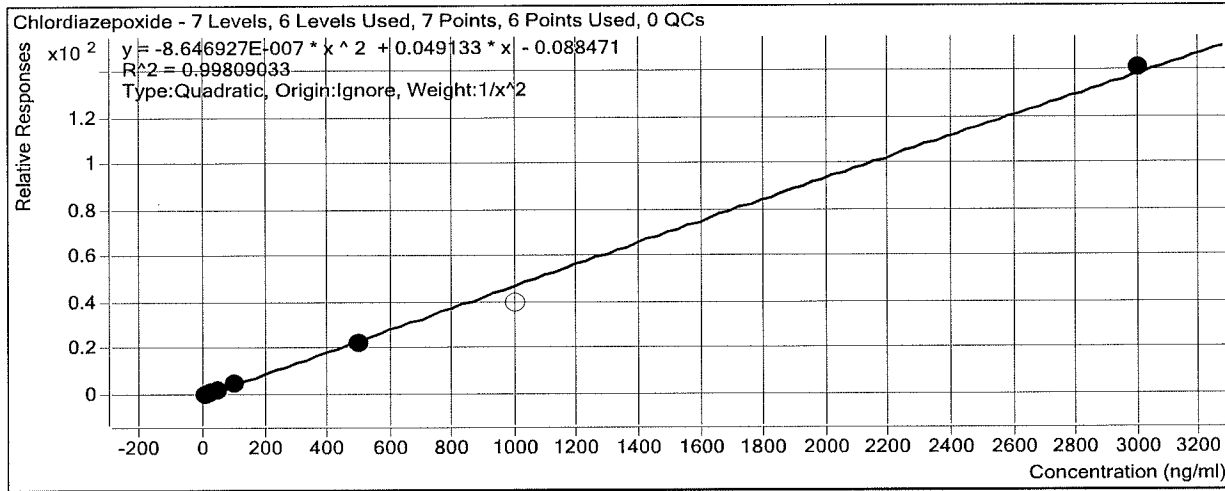
Sample	Level	Enabled	Exp Conc	Final Conc	Accuracy
10 ng/mL	2	<input checked="" type="checkbox"/>	10	9.7	96.5
25 ng/mL	4	<input checked="" type="checkbox"/>	25	26.6	106.3
50 ng/mL	5	<input checked="" type="checkbox"/>	50	52.7	105.3
100 ng/mL	6	<input checked="" type="checkbox"/>	100	101.0	101.0
500 ng/mL	7	<input checked="" type="checkbox"/>	500	441.3	88.3
1000 ng/mL	8	<input type="checkbox"/>	1000	681.9	68.2
3000 ng/mL	9	<input checked="" type="checkbox"/>	3000	3118.1	103.9

ISP Forensics Calibration Curve Report

Batch Data Path D:\2017 Data\3-15-17 urine benz\QuantResults\3-15-17 urine benz.batch.bin

Last Calib Update 3/16/2017 8:12 AM **Analyst Name** ISP TOX

Target Compound *Chlordiazepoxide*
Internal Standard *Nordiazepam-D5 ISTD*



Sample	Level	Enabled	Exp Conc	Final Conc	Accuracy
10 ng/mL	2	<input checked="" type="checkbox"/>	10	9.9	98.8
25 ng/mL	4	<input checked="" type="checkbox"/>	25	25.3	101.2
50 ng/mL	5	<input checked="" type="checkbox"/>	50	51.2	102.4
100 ng/mL	6	<input checked="" type="checkbox"/>	100	103.3	103.3
500 ng/mL	7	<input checked="" type="checkbox"/>	500	465.9	93.2
1000 ng/mL	8	<input type="checkbox"/>	1000	826.6	82.7
3000 ng/mL	9	<input checked="" type="checkbox"/>	3000	3032.3	101.1

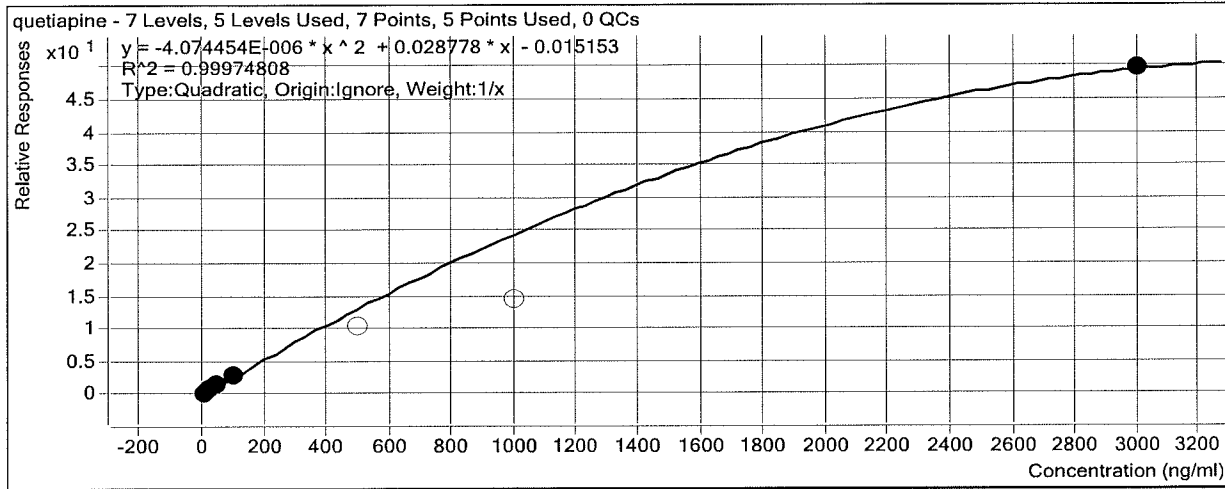
ISP

ISP Forensics Calibration Curve Report

Batch Data Path D:\2017 Data\3-15-17 urine benz\QuantResults\3-15-17 urine benz.batch.bin

Last Calib Update 3/16/2017 8:12 AM **Analyst Name** ISP TOX

Target Compound *quetiapine*
Internal Standard *Oxazepam D5 ISTD*



Sample	Level	Enabled	Exp Conc	Final Conc	Accuracy
10 ng/mL	2	<input checked="" type="checkbox"/>	10	9.5	95.0
25 ng/mL	4	<input checked="" type="checkbox"/>	25	25.6	102.5
50 ng/mL	5	<input checked="" type="checkbox"/>	50	52.7	105.4
100 ng/mL	6	<input checked="" type="checkbox"/>	100	97.1	97.1
500 ng/mL	7	<input type="checkbox"/>	500	380.2	76.0
1000 ng/mL	8	<input type="checkbox"/>	1000	546.5	54.7
3000 ng/mL	9	<input checked="" type="checkbox"/>	3000	3000.3	100.0

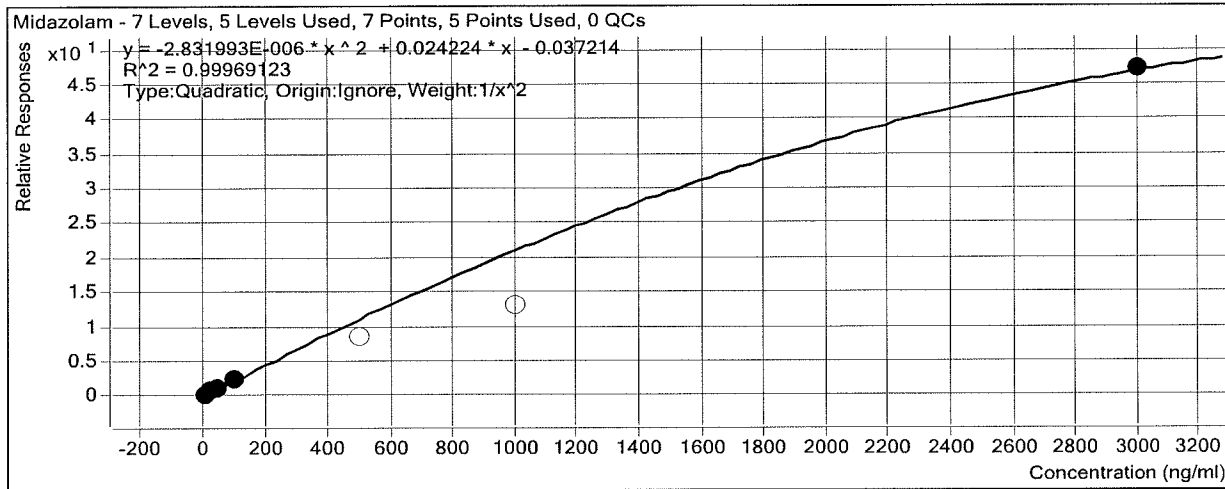
ISP Forensics Calibration Curve Report

Batch Data Path D:\2017 Data\3-15-17 urine benz\QuantResults\3-15-17 urine benz.batch.bin

Last Calib Update 3/16/2017 8:12 AM

Analyst Name ISP TOX

Target Compound *Midazolam*
Internal Standard *Clonazepam-D4 ISTD*



Sample	Level	Enabled	Exp Conc	Final Conc	Accuracy
10 ng/mL	2	<input checked="" type="checkbox"/>	10	9.9	99.4
25 ng/mL	4	<input checked="" type="checkbox"/>	25	25.4	101.5
50 ng/mL	5	<input checked="" type="checkbox"/>	50	50.4	100.8
100 ng/mL	6	<input checked="" type="checkbox"/>	100	98.2	98.2
500 ng/mL	7	<input type="checkbox"/>	500	366.0	73.2
1000 ng/mL	8	<input type="checkbox"/>	1000	574.7	57.5
3000 ng/mL	9	<input checked="" type="checkbox"/>	3000	3003.4	100.1

FW

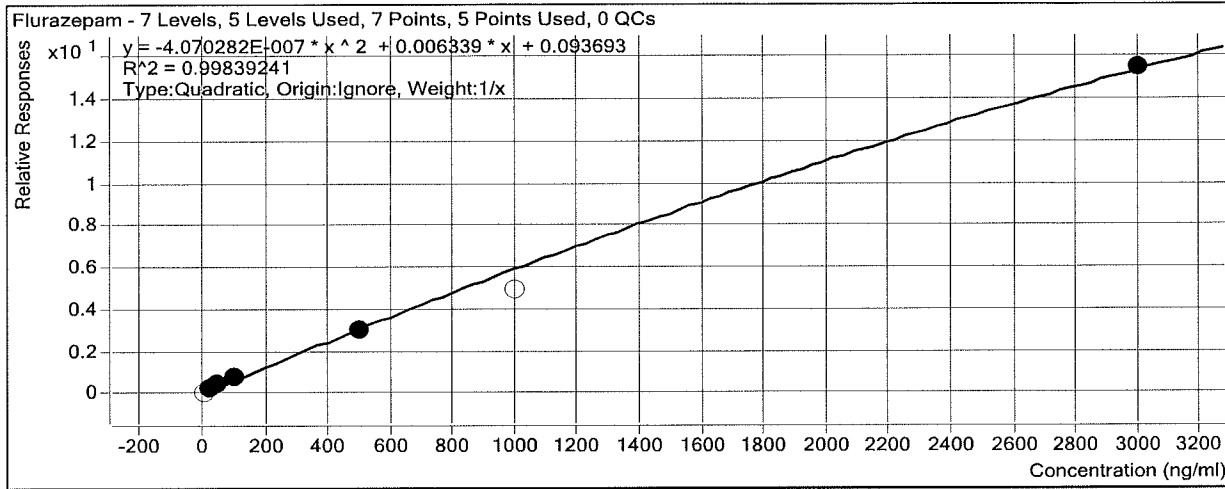
ISP Forensics Calibration Curve Report

Batch Data Path D:\2017 Data\3-15-17 urine benz\QuantResults\3-15-17 urine benz.batch.bin

Last Calib Update 3/16/2017 8:12 AM

Analyst Name ISP TOX

Target Compound *Flurazepam*
Internal Standard *Diazepam-D5 ISTD*



Sample	Level	Enabled	Exp Conc	Final Conc	Accuracy
10 ng/mL	2	<input type="checkbox"/>	10	0.0	0.0
25 ng/mL	4	<input checked="" type="checkbox"/>	25	20.1	80.4
50 ng/mL	5	<input checked="" type="checkbox"/>	50	54.5	108.9
100 ng/mL	6	<input checked="" type="checkbox"/>	100	113.8	113.8
500 ng/mL	7	<input checked="" type="checkbox"/>	500	483.7	96.7
1000 ng/mL	8	<input type="checkbox"/>	1000	801.9	80.2
3000 ng/mL	9	<input checked="" type="checkbox"/>	3000	3003.3	100.1

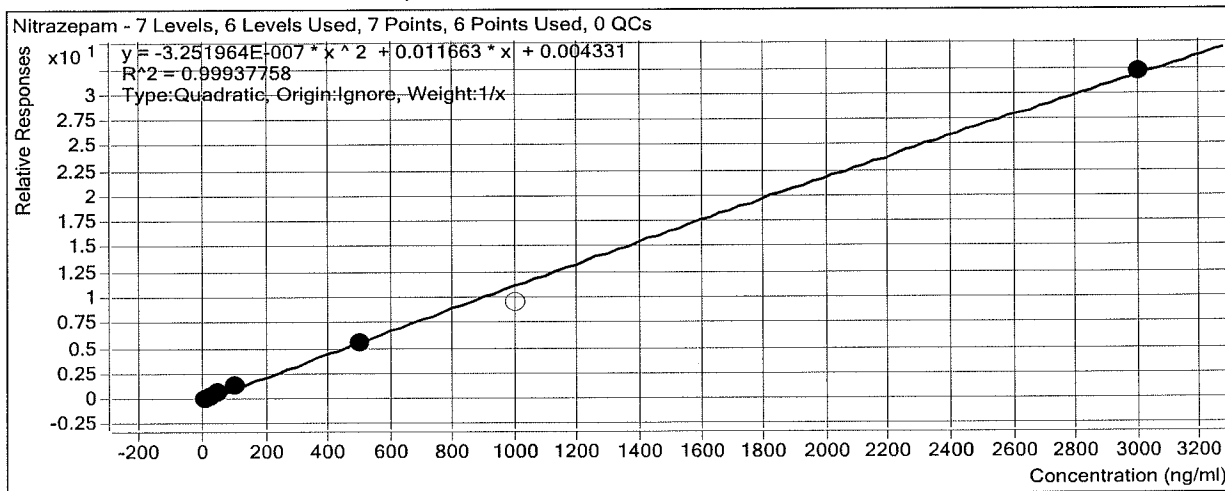
ISP Forensics Calibration Curve Report

Batch Data Path D:\2017 Data\3-15-17 urine benz\QuantResults\3-15-17 urine benz.batch.bin

Last Calib Update 3/16/2017 8:12 AM

Analyst Name ISP TOX

Target Compound Nitrazepam
Internal Standard Clonazepam-D4 ISTD



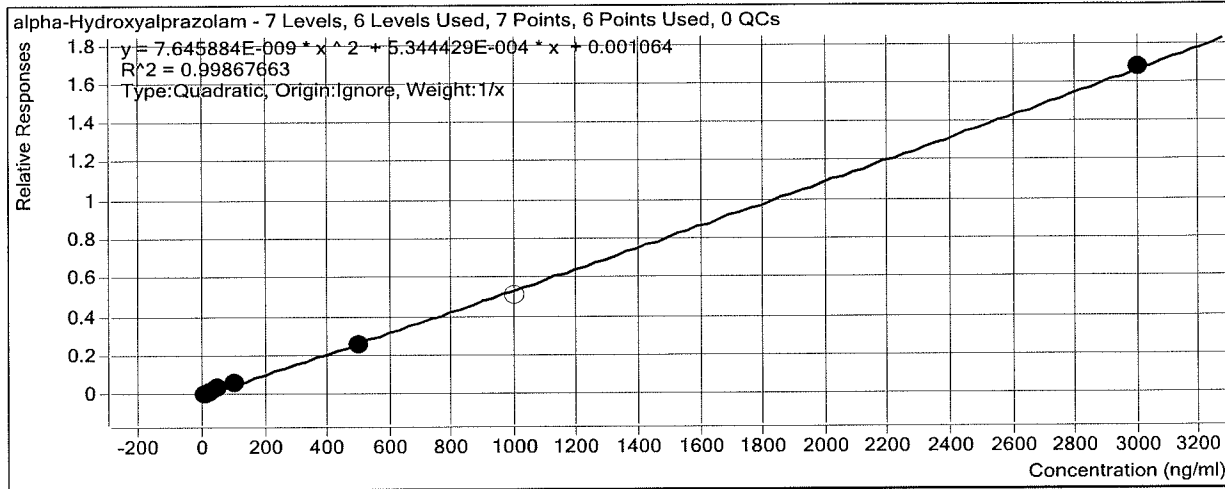
Sample	Level	Enabled	Exp Conc	Final Conc	Accuracy
10 ngmL	2	<input checked="" type="checkbox"/>	10	8.5	84.9
25 ngmL	4	<input checked="" type="checkbox"/>	25	25.5	102.0
50 ngmL	5	<input checked="" type="checkbox"/>	50	52.8	105.5
100 ngmL	6	<input checked="" type="checkbox"/>	100	110.4	110.4
500 ngmL	7	<input checked="" type="checkbox"/>	500	485.5	97.1
1000 ngmL	8	<input type="checkbox"/>	1000	836.3	83.6
3000 ngmL	9	<input checked="" type="checkbox"/>	3000	3002.3	100.1

ISP Forensics Calibration Curve Report

Batch Data Path D:\2017 Data\3-15-17 urine benz\QuantResults\3-15-17 urine benz.batch.bin

Last Calib Update 3/16/2017 8:12 AM **Analyst Name** ISP TOX

Target Compound *alpha-Hydroxyalprazolam*
Internal Standard *alphahydroxyalprazolam-D5 ISTD*



Sample	Level	Enabled	Exp Conc	Final Conc	Accuracy
10 ng/mL	2	<input checked="" type="checkbox"/>	10	8.1	81.0
25 ng/mL	4	<input checked="" type="checkbox"/>	25	24.2	96.8
50 ng/mL	5	<input checked="" type="checkbox"/>	50	54.5	109.0
100 ng/mL	6	<input checked="" type="checkbox"/>	100	117.7	117.7
500 ng/mL	7	<input checked="" type="checkbox"/>	500	477.7	95.5
1000 ng/mL	8	<input type="checkbox"/>	1000	940.6	94.1
3000 ng/mL	9	<input checked="" type="checkbox"/>	3000	3002.9	100.1

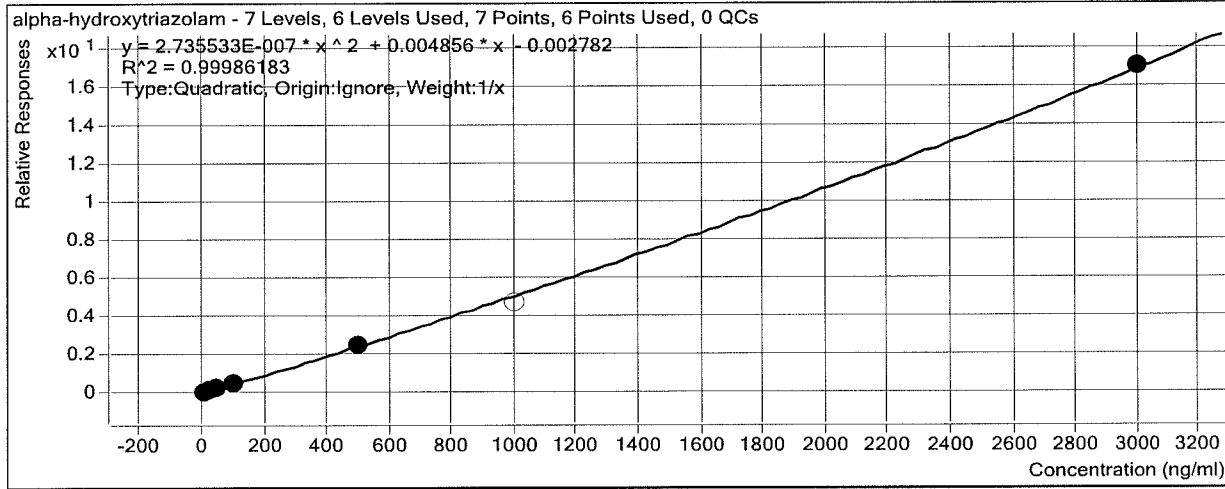
ISP

ISP Forensics Calibration Curve Report

Batch Data Path D:\2017 Data\3-15-17 urine benz\QuantResults\3-15-17 urine benz.batch.bin

Last Calib Update 3/16/2017 8:12 AM **Analyst Name** ISP TOX

Target Compound *alpha-hydroxytriazolam*
Internal Standard *Nordiazepam-D5 ISTD*



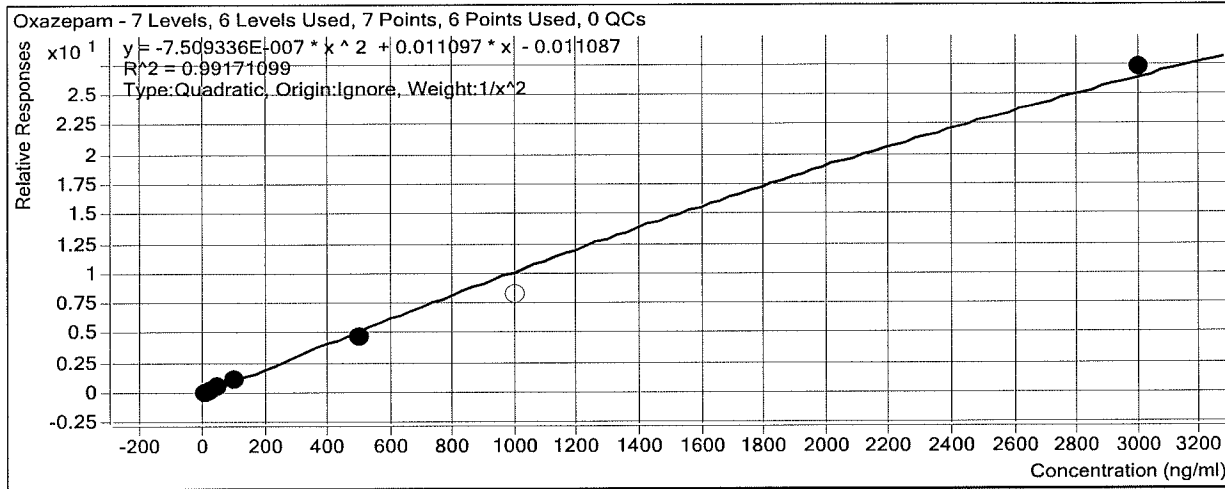
Sample	Level	Enabled	Exp Conc	Final Conc	Accuracy
10 ng/mL	2	<input checked="" type="checkbox"/>	10	9.1	91.3
25 ng/mL	4	<input checked="" type="checkbox"/>	25	25.7	103.0
50 ng/mL	5	<input checked="" type="checkbox"/>	50	50.4	100.8
100 ng/mL	6	<input checked="" type="checkbox"/>	100	106.3	106.3
500 ng/mL	7	<input checked="" type="checkbox"/>	500	492.6	98.5
1000 ng/mL	8	<input type="checkbox"/>	1000	927.0	92.7
3000 ng/mL	9	<input checked="" type="checkbox"/>	3000	3000.8	100.0

ISP Forensics Calibration Curve Report

Batch Data Path D:\2017 Data\3-15-17 urine benz\QuantResults\3-15-17 urine benz.batch.bin

Last Calib Update 3/16/2017 8:12 AM **Analyst Name** ISP TOX

Target Compound Oxazepam
Internal Standard Oxazepam D5 ISTD



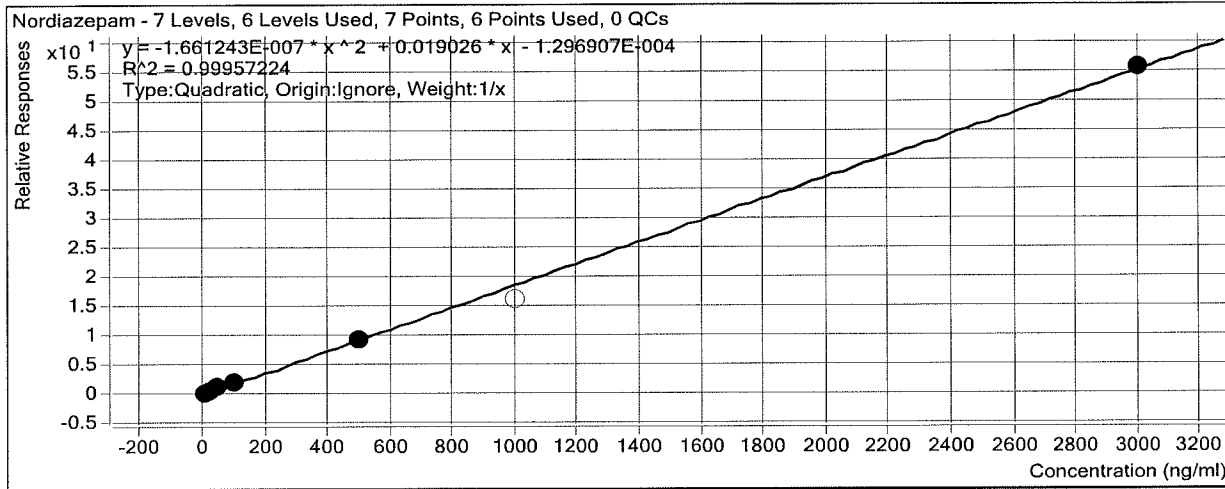
Sample	Level	Enabled	Exp Conc	Final Conc	Accuracy
10 ng/mL	2	<input checked="" type="checkbox"/>	10	9.7	96.8
25 ng/mL	4	<input checked="" type="checkbox"/>	25	26.2	104.6
50 ng/mL	5	<input checked="" type="checkbox"/>	50	53.4	106.7
100 ng/mL	6	<input checked="" type="checkbox"/>	100	103.1	103.1
500 ng/mL	7	<input checked="" type="checkbox"/>	500	430.4	86.1
1000 ng/mL	8	<input type="checkbox"/>	1000	795.2	79.5
3000 ng/mL	9	<input checked="" type="checkbox"/>	3000	3098.7	103.3

ISP Forensics Calibration Curve Report

Batch Data Path D:\2017 Data\3-15-17 urine benz\QuantResults\3-15-17 urine benz.batch.bin

Last Calib Update 3/16/2017 8:12 AM **Analyst Name** ISP TOX

Target Compound Nordiazepam
Internal Standard Nordiazepam-D5 ISTD



Sample	Level	Enabled	Exp Conc	Final Conc	Accuracy
10 ng/mL	2	<input checked="" type="checkbox"/>	10	8.5	84.8
25 ng/mL	4	<input checked="" type="checkbox"/>	25	26.1	104.6
50 ng/mL	5	<input checked="" type="checkbox"/>	50	52.2	104.3
100 ng/mL	6	<input checked="" type="checkbox"/>	100	108.7	108.7
500 ng/mL	7	<input checked="" type="checkbox"/>	500	487.8	97.6
1000 ng/mL	8	<input type="checkbox"/>	1000	856.4	85.6
3000 ng/mL	9	<input checked="" type="checkbox"/>	3000	3001.8	100.1

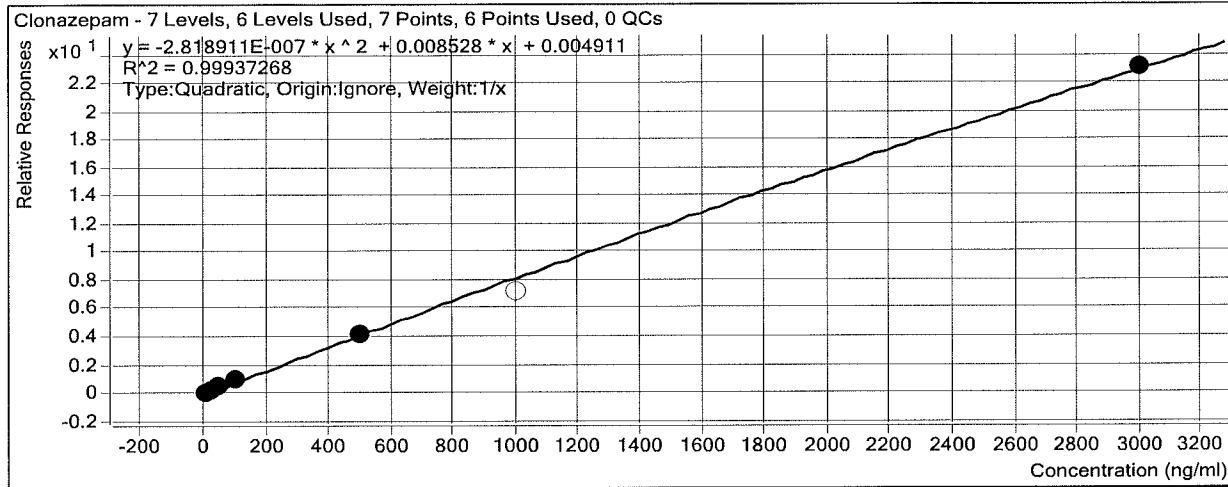
ISP Forensics Calibration Curve Report

Batch Data Path D:\2017 Data\3-15-17 urine benz\QuantResults\3-15-17 urine benz.batch.bin

Last Calib Update 3/16/2017 8:12 AM

Analyst Name ISP TOX

Target Compound Clonazepam
Internal Standard Clonazepam-D4 ISTD



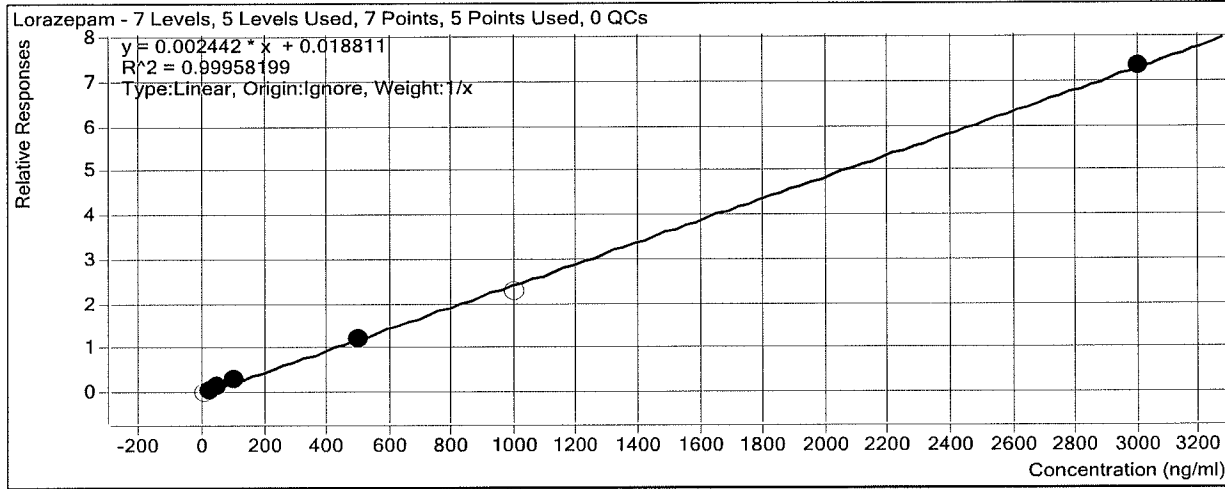
Sample	Level	Enabled	Exp Conc	Final Conc	Accuracy
10 ng/mL	2	<input checked="" type="checkbox"/>	10	8.2	81.8
25 ng/mL	4	<input checked="" type="checkbox"/>	25	26.0	104.1
50 ng/mL	5	<input checked="" type="checkbox"/>	50	54.2	108.3
100 ng/mL	6	<input checked="" type="checkbox"/>	100	108.5	108.5
500 ng/mL	7	<input checked="" type="checkbox"/>	500	485.7	97.1
1000 ng/mL	8	<input type="checkbox"/>	1000	873.6	87.4
3000 ng/mL	9	<input checked="" type="checkbox"/>	3000	3002.4	100.1

ISP Forensics Calibration Curve Report

Batch Data Path D:\2017 Data\3-15-17 urine benz\QuantResults\3-15-17 urine benz.batch.bin

Last Calib Update 3/16/2017 8:12 AM **Analyst Name** ISP TOX

Target Compound Lorazepam
Internal Standard Oxazepam D5 ISTD



Sample	Level	Enabled	Exp Conc	Final Conc	Accuracy
10 ng/mL	2	<input type="checkbox"/>	10	2.1	21.4
25 ng/mL	4	<input checked="" type="checkbox"/>	25	21.9	87.6
50 ng/mL	5	<input checked="" type="checkbox"/>	50	51.9	103.8
100 ng/mL	6	<input checked="" type="checkbox"/>	100	109.5	109.5
500 ng/mL	7	<input checked="" type="checkbox"/>	500	496.2	99.2
1000 ng/mL	8	<input type="checkbox"/>	1000	928.5	92.9
3000 ng/mL	9	<input checked="" type="checkbox"/>	3000	2995.5	99.9

ISP

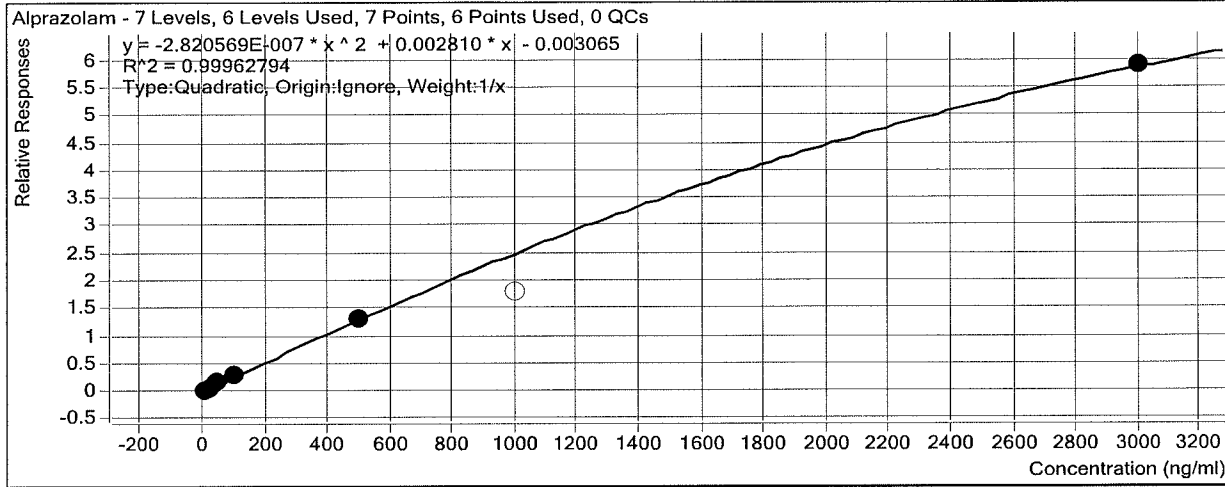
ISP Forensics Calibration Curve Report

Batch Data Path D:\2017 Data\3-15-17 urine benz\QuantResults\3-15-17 urine benz.batch.bin

Last Calib Update 3/16/2017 8:12 AM

Analyst Name ISP TOX

Target Compound Alprazolam
Internal Standard alphahydroxyalprazolam-D5 ISTD



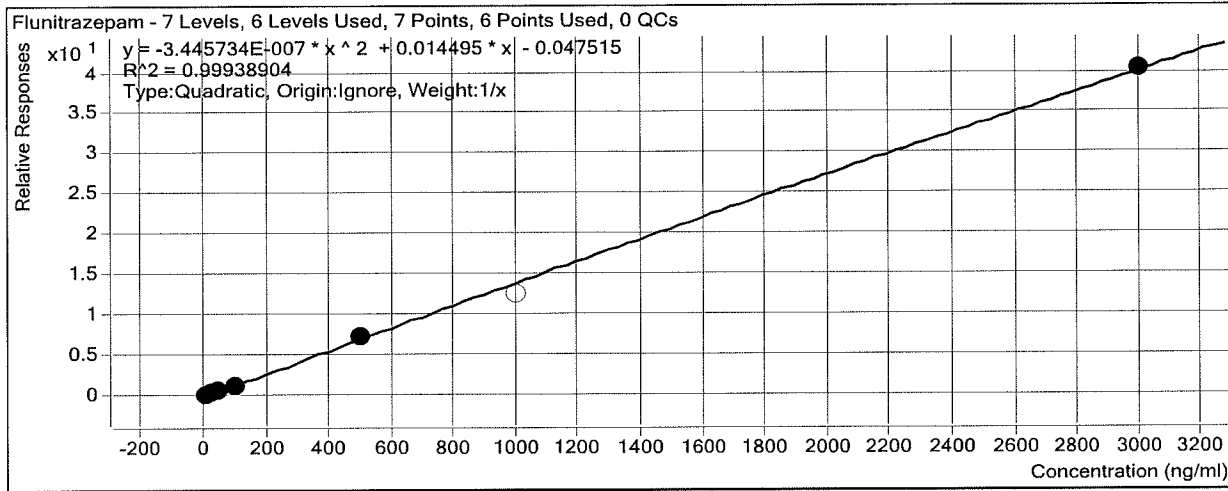
Sample	Level	Enabled	Exp Conc	Final Conc	Accuracy
10 ng/mL	2	<input checked="" type="checkbox"/>	10	9.5	94.5
25 ng/mL	4	<input checked="" type="checkbox"/>	25	23.7	94.7
50 ng/mL	5	<input checked="" type="checkbox"/>	50	55.2	110.4
100 ng/mL	6	<input checked="" type="checkbox"/>	100	101.6	101.6
500 ng/mL	7	<input checked="" type="checkbox"/>	500	493.7	98.7
1000 ng/mL	8	<input type="checkbox"/>	1000	680.3	68.0
3000 ng/mL	9	<input checked="" type="checkbox"/>	3000	3002.1	100.1

ISP Forensics Calibration Curve Report

Batch Data Path D:\2017 Data\3-15-17 urine benz\QuantResults\3-15-17 urine benz.batch.bin

Last Calib Update 3/16/2017 8:12 AM **Analyst Name** ISP TOX

Target Compound Flunitrazepam
Internal Standard Clonazepam-D4 ISTD



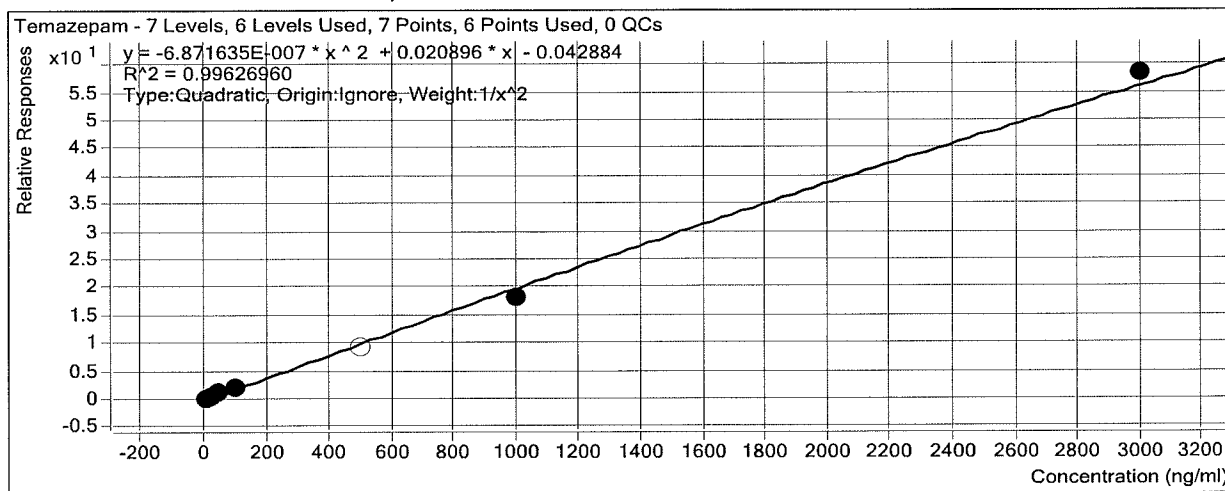
Sample	Level	Enabled	Exp Conc	Final Conc	Accuracy
10 ng/mL	2	<input checked="" type="checkbox"/>	10	11.3	112.6
25 ng/mL	4	<input checked="" type="checkbox"/>	25	25.6	102.5
50 ng/mL	5	<input checked="" type="checkbox"/>	50	46.1	92.1
100 ng/mL	6	<input checked="" type="checkbox"/>	100	90.0	90.0
500 ng/mL	7	<input checked="" type="checkbox"/>	500	514.3	102.9
1000 ng/mL	8	<input type="checkbox"/>	1000	883.2	88.3
3000 ng/mL	9	<input checked="" type="checkbox"/>	3000	2997.7	99.9

ISP Forensics Calibration Curve Report

Batch Data Path D:\2017 Data\3-15-17 urine benz\QuantResults\3-15-17 urine benz.batch.bin

Last Calib Update 3/16/2017 8:12 AM **Analyst Name** ISP TOX

Target Compound *Temazepam*
Internal Standard *Oxazepam D5 ISTD*



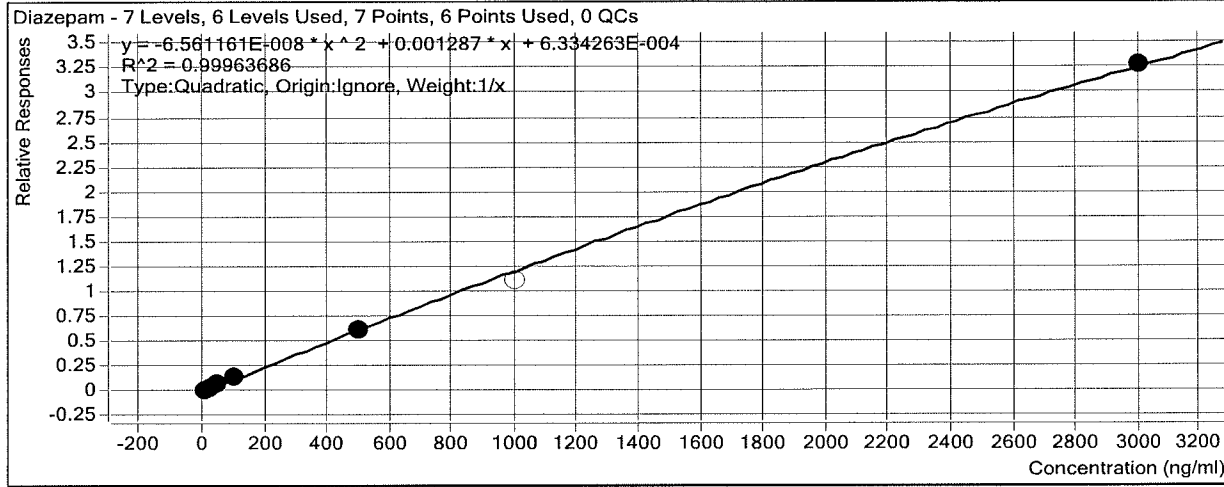
Sample	Level	Enabled	Exp Conc	Final Conc	Accuracy
10 ngmL	2	<input checked="" type="checkbox"/>	10	9.8	98.2
25 ngmL	4	<input checked="" type="checkbox"/>	25	25.6	102.6
50 ngmL	5	<input checked="" type="checkbox"/>	50	51.5	103.0
100 ngmL	6	<input checked="" type="checkbox"/>	100	102.7	102.7
500 ngmL	7	<input type="checkbox"/>	500	459.3	91.9
1000 ngmL	8	<input checked="" type="checkbox"/>	1000	899.3	89.9
3000 ngmL	9	<input checked="" type="checkbox"/>	3000	3112.3	103.7

ISP Forensics Calibration Curve Report

Batch Data Path D:\2017 Data\3-15-17 urine benz\QuantResults\3-15-17 urine benz.batch.bin

Last Calib Update 3/16/2017 8:12 AM **Analyst Name** ISP TOX

Target Compound *Diazepam*
Internal Standard *Diazepam-D5 ISTD*



Sample	Level	Enabled	Exp Conc	Final Conc	Accuracy
10 ng/mL	2	<input checked="" type="checkbox"/>	10	8.6	86.4
25 ng/mL	4	<input checked="" type="checkbox"/>	25	25.6	102.3
50 ng/mL	5	<input checked="" type="checkbox"/>	50	54.3	108.6
100 ng/mL	6	<input checked="" type="checkbox"/>	100	104.6	104.6
500 ng/mL	7	<input checked="" type="checkbox"/>	500	490.1	98.0
1000 ng/mL	8	<input type="checkbox"/>	1000	904.6	90.5
3000 ng/mL	9	<input checked="" type="checkbox"/>	3000	3001.9	100.1